

Recipients of the 2025 Teeny Simmons Award



Louisiana Architecture Education & Research Fund,
Funded by Louisiana Licensed Architects

Louisiana Architecture Education and Research Fund Program

In 2016, the Louisiana State Board of Architectural Examiners received statutory authority to allocate up to ten percent of all license renewal and delinquent fees each fiscal year to fund a program to better prepare students for internships and future careers in architecture. The Louisiana Architecture Education and Research Fund was established to provide financial support to NAAB-accredited architecture programs in Louisiana, helping to enhance the understanding of issues central to an architect's responsibility for public health, safety, and welfare and key issues in architectural practice.

These funds can be used in various ways, such as integrating practice and education into the professional NAAB degree curriculum, implementing an integrated path-to-licensure program that results in architectural licensure upon graduation, facilitating enrollment and completion of training requirements for the Architectural Experience Program (AXP) and supporting student preparation for the Architectural Registration Exam (ARE).

In February 2018, rules governing the fund's implementation were adopted, and the initiative was launched shortly thereafter. Three of Louisiana's four NAAB-accredited universities submitted proposals that were approved by the board. Awards were granted to these institutions for programs launched during the 2019-2020 academic year. Although the COVID-19 pandemic caused delays, all three universities successfully completed their inaugural programs. Since then, the board has granted awards annually. The programs highlighted in this publication reflect the work stemming from the 2024-2025 award cycle.

The awards granted through the fund are known as the "Teeny Simmons Award," named in honor of Teeny Simmons, who guided emerging professionals and architects through the evolving registration process for 41 years before her retirement in November 2016. Teeny was honored by the Louisiana House of Representatives in June 2016 with a prestigious commendation for her selfless and outstanding service to architects in Louisiana and across the nation. Throughout her career, she was dedicated to supporting the board's mission to protect public health, safety, and welfare by ensuring that architects practiced responsibly and ethically. Teeny was widely known for her warmth and genuine interest in the well-being of others. Sadly, she passed away in December 2016, shortly after her retirement, following a courageous battle with cancer.

The board remains proud to support a program that not only fosters the growth of future architects but also honors the legacy of a woman who served the profession with passion and humility.



LOUISIANA TECH
— UNIVERSITY —

MEDIATED ASSEMBLIES



LOUISIANA TECH UNIVERSITY
SCHOOL OF DESIGN

2024-2025

MASTER OF ARCHITECTURE STUDENT WORK

Mediated Assemblies



**Architecture is the
art of reconciliation
between ourselves
and the world, and this
mediation takes place
through the senses.**

—

Juhani Pallasmaa



Student Center, Atrium
Emma Wyatt

Foreword

The Master of Architecture program at Louisiana Tech University's School of Design emphasizes building assemblies as both technical systems and mediating frameworks between concept and realization. At its core is a nine-month comprehensive project, where students develop a personal design vision through tectonic clarity and professional practice, supported by both digital and physical craft.

Since 2019, the program has received ongoing support from the LSBAE Mary "Teeny" Simmons Architecture Education and Research Fund, which has deepened student engagement with consultants in building envelope, mechanical, and structural systems. This year, Brian Delaney (Heintges) and Robby Vogel (WGI) guided students in integrating technical expertise with architectural intent.

The program also welcomed alumnus Bailey Craighead to the faculty, bringing a decade of professional experience in Dallas and Austin. Her expertise in Revit workflows and practice methodologies strengthened the link between consultant feedback and student implementation, embedding professional tools directly into studio culture.

Through consultant visits and iterative reviews, students balanced conceptual ambition with material, technical, and performance demands, mirroring the realities of practice, where success lies in turning competing priorities into design opportunity.

Collectively, the work reflects the architecture profession's mediating role, bridging design intent, technical execution, and disciplinary integration. The grant-supported engagement with consultants, enhanced by contemporary practice methodologies, has been instrumental in preparing our students for the nuanced realities of architectural practice. The work presented here documents the outcomes of this culminating educational model: *Mediated Assemblies*.

Section One focuses on design development in façade and structure, demonstrating how students integrated consultant expertise to resolve complex envelope and structural strategies.

Section Two presents enlarged building assemblies that examine the interrelationship between envelope layers, primary structure, and interior spatial conditions.

Section Three illustrates HVAC system development, showcasing student understanding of mechanical layout, ductwork sizing, and spatial coordination.

Section Four includes detailed façade sections and elevations, reflecting a sophisticated grasp of material articulation and systems integration.

Section Five concludes with a selection of final presentations and renderings that synthesize the entire design process.



OPEN TO BEYOND

LARGE MULTIPURPOSE

SMALL MULTIPURPOSE

HALL

HALL

ALUMINUM VERTICAL LOUVER
8" SQUARE HSS
DOUBLE C CHANNEL COLUMN

1/4"X30" RIB STRUCTURE
BURDOTT CHANNEL SYSTEM
ALUMINUM CHANNEL
ALUMINUM MESH SCREEN

6X6 LED 48" STRIP DOWNLIGHT
1 1/2" UNISTRUT CHANNEL
36" Ø CONICAL DIFFUSER
ARMSTRONG METAL WORKS 2'X4'
MESH TORISON SPRING CEILING

ACOUSTICAL CEILING CLOUD
18"Ø FLAT RECTANGULAR CEILING
CLOUD

SPIRAL DUCTWORK
12" Ø CONE DIFFUSER

SPIRAL
DUCTWORK

10" SQUARE HSS
W 14"X30

3" LIGHTWEIGHT CONCRETE ON
2" COMPOSITE METAL DECK

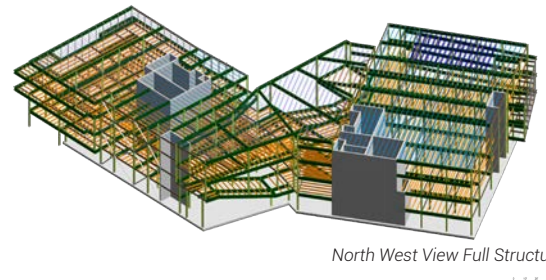
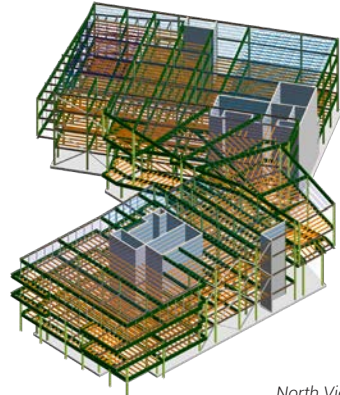
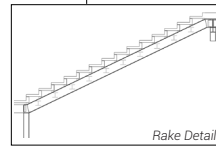
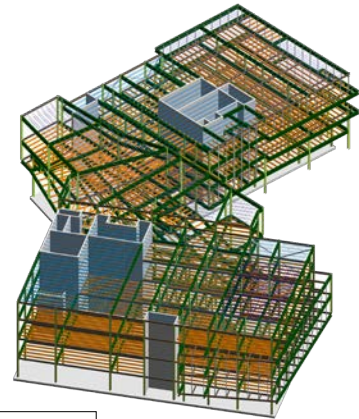
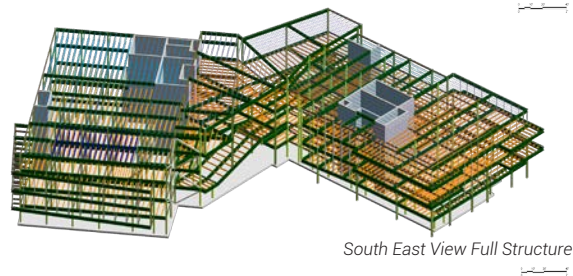
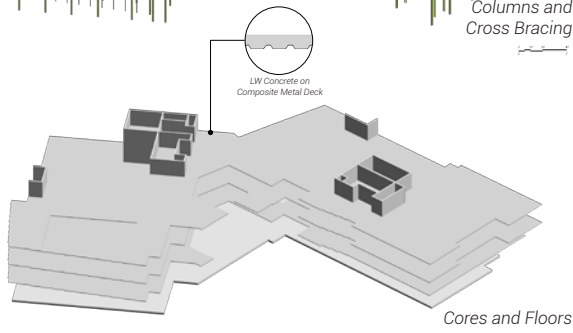
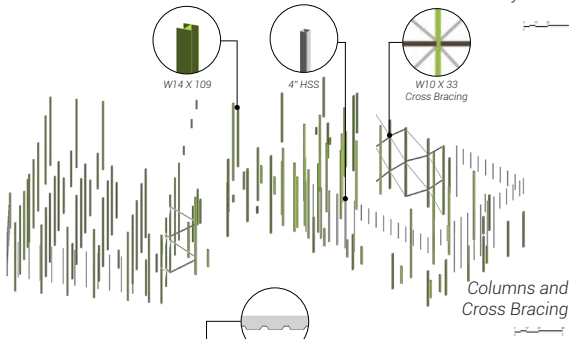
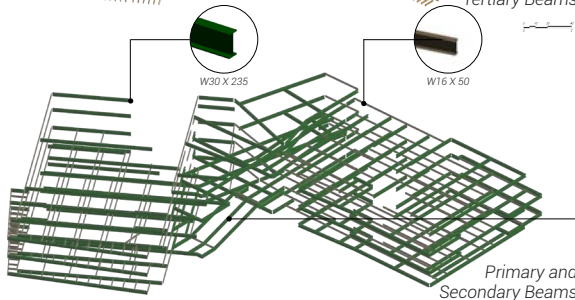
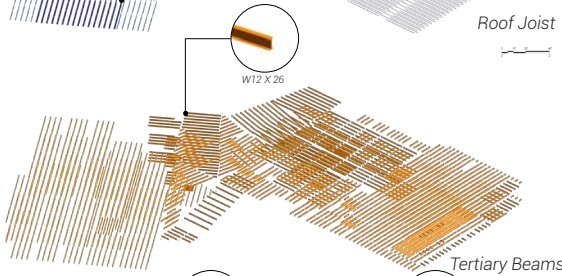
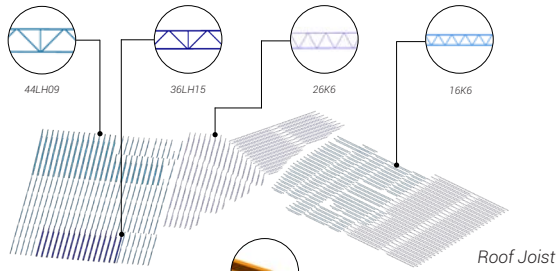
SECTION 1

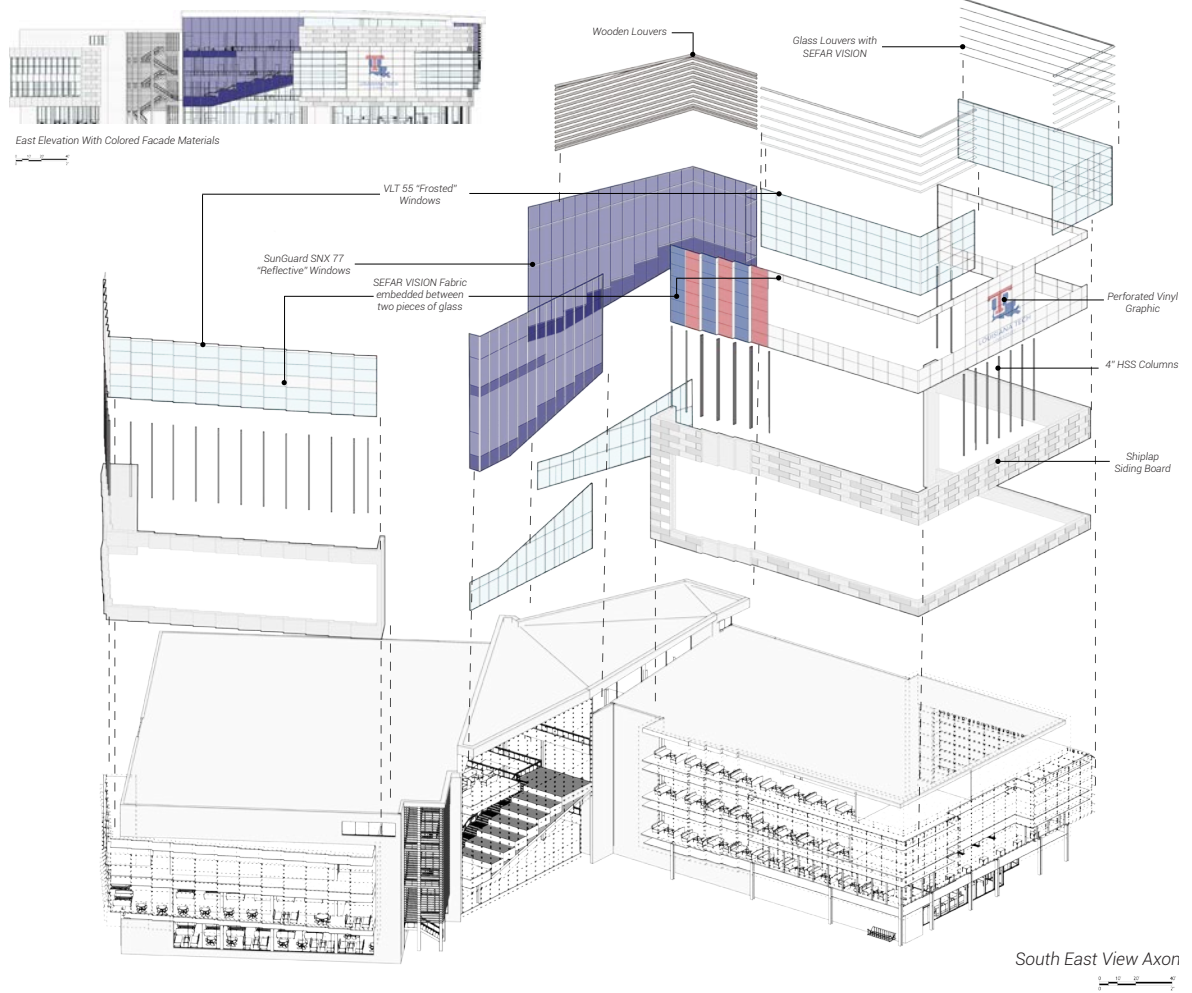
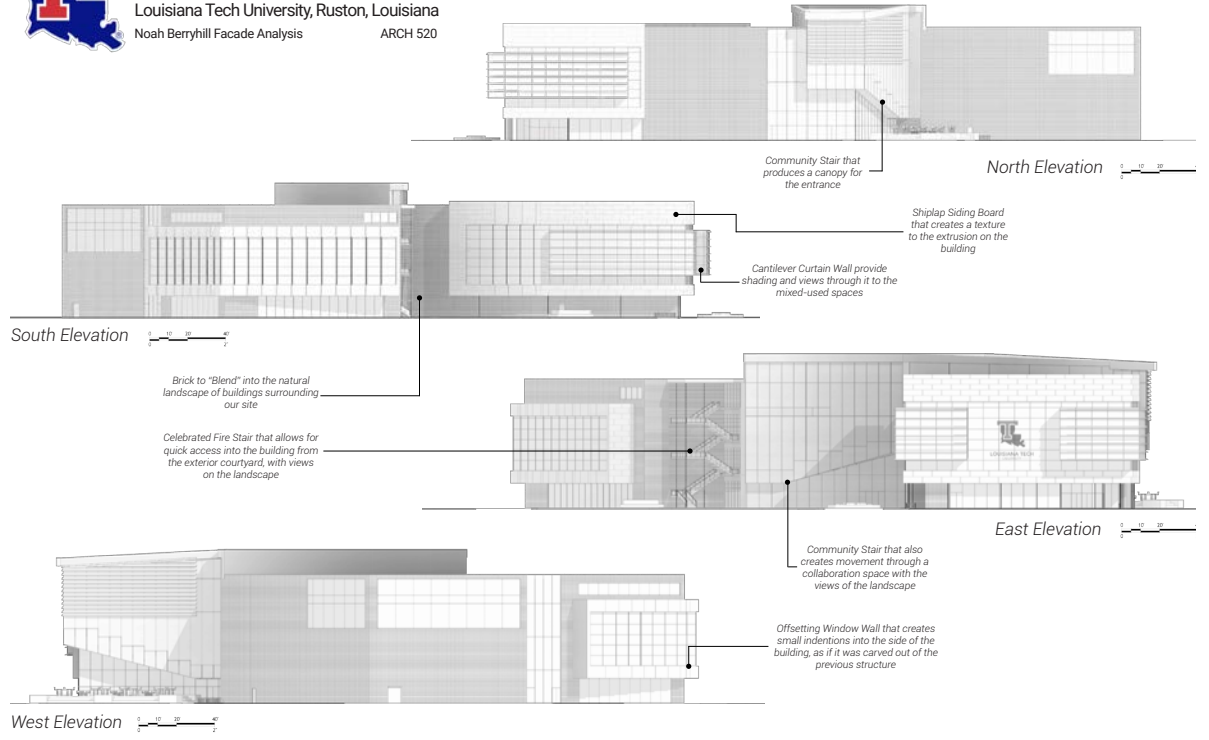
Structure and Façade

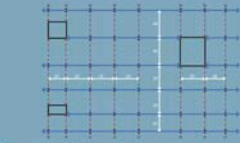
Following the initial programming and schematic design phases, students developed their projects in greater detail. They conducted rigorous investigations into structural and façade systems, working with consultants to build a thorough understanding.

For the structure, students collaborated with a consulting structural engineer to create detailed system assemblies that illustrated primary, secondary, and tertiary elements through both assembled and exploded axonometric drawings.

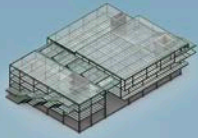
For the façade, students worked with a façade consultant to design detailed envelope assemblies, highlighting layers and patterns with an emphasis on material properties, seaming, texture, depth, and the opacity of both visible and concealed connections. Throughout the process, students met with consultants in both group and individual sessions.



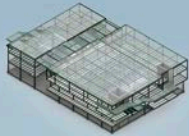




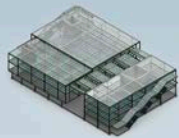
Structure Grid Pattern



NE Isometric



NW Isometric

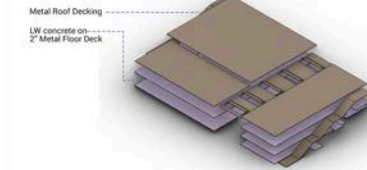


SE Isometric

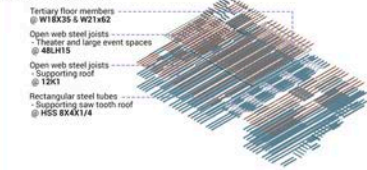


SW Isometric

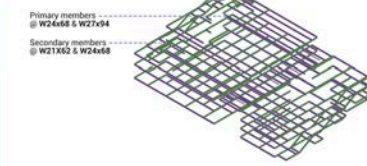
Floor & Roof Decking



Steel Tertiary Systems



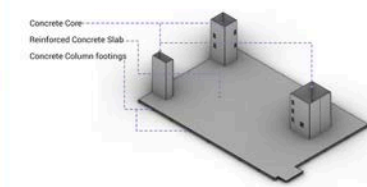
Steel Girder & Beam Systems



Steel Columns



Concrete Slab & Shear Walls



SE ELEVATION



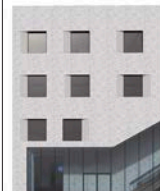
SW ELEVATION



NW ELEVATION



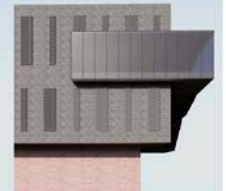
NE ELEVATION



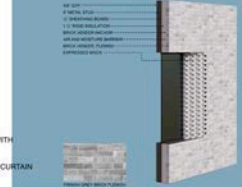
A SECTION OF THE GREY BRICK FACADE



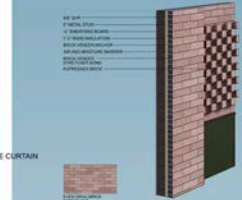
A SECTION OF THE RED BRICK FACADE



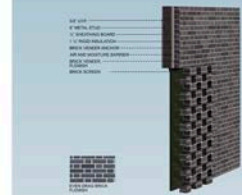
A SECTION OF THE DARK BRICK FACADE



GREY BRICK FACADE DETAIL



RED BRICK FACADE DETAIL



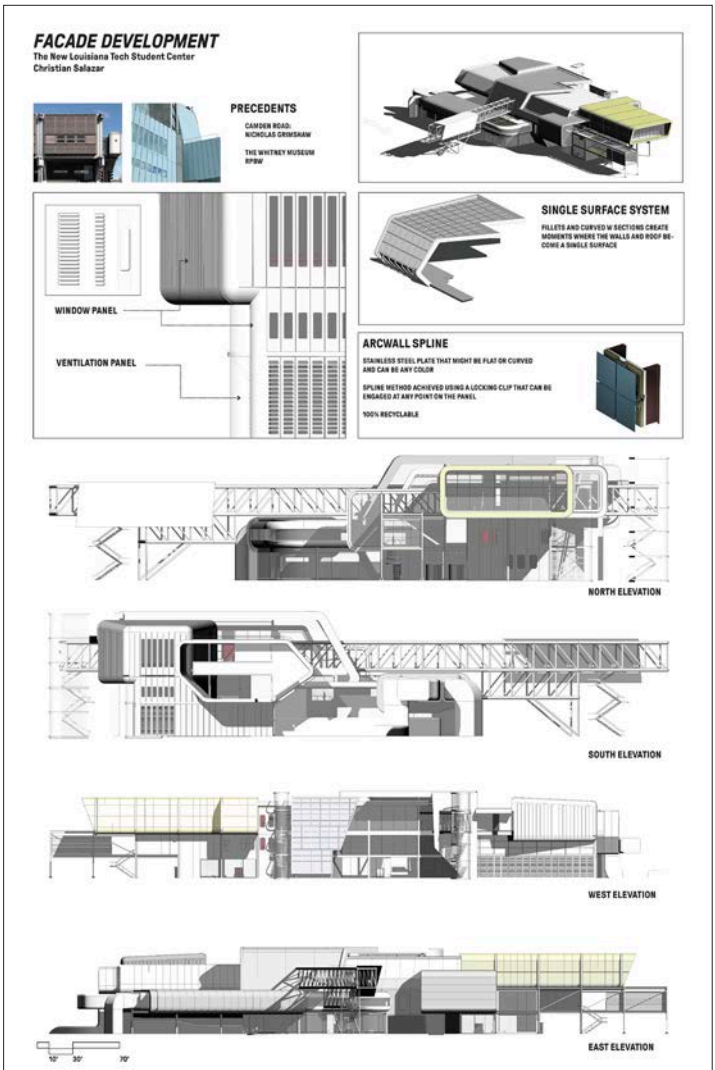
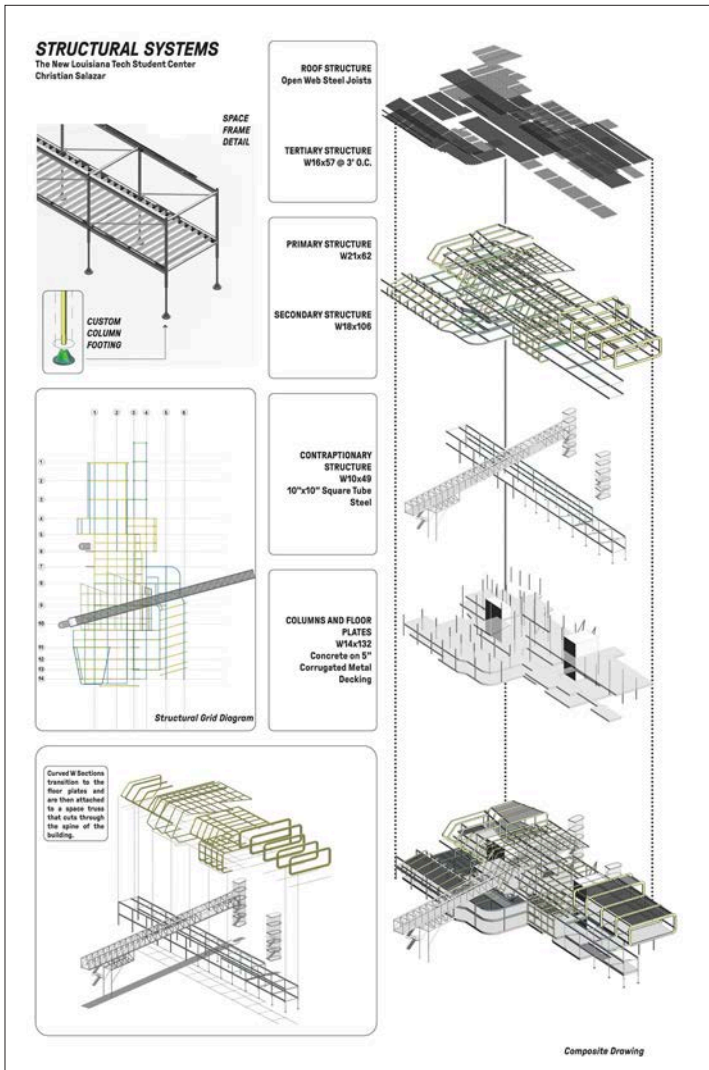
DARK BRICK FACADE DETAIL

TINTED CURTAIN WALL WITH CERAMIC FRIT PATTERN

TINTED CURTAIN WALL

OPAQUE CURTAIN WALL

TINTED CURTAIN WALL



Structure and Façade Analysis
Christian Salazar

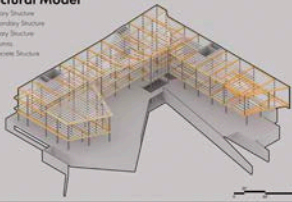
STRUCTURAL DEVELOPMENT

Louisiana Tech Student Center

Nathan Bucy
ARCH 520

Structural Model

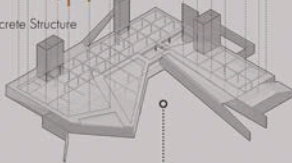
- Primary Structure
- Secondary Structure
- Columns
- Concrete Structure



A Steel Structure

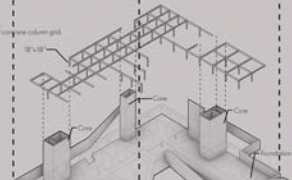


B Concrete Structure



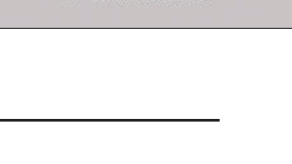
B.3

Structural concrete slab supported by concrete columns and retaining walls.



B.2

Structural concrete column grid.



B.1

Foundation, Core, and Retaining Wall.

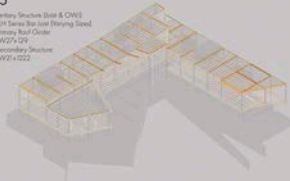


Concrete Structure

Steel Structure

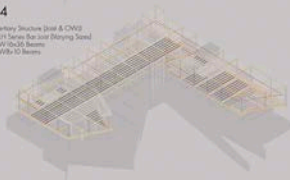
A.5

- Secondary Structure (East & West)
- 4x4 Series Bar Joint (Primary Beams)
- Primary Roof Center
- WV21-225
- Secondary Structure
- WV21-4222



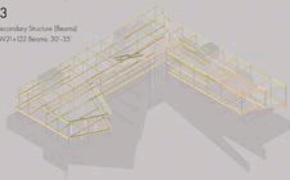
A.4

- Secondary Structure (East & West)
- 4x4 Series Bar Joint (Primary Beams)
- WV21-225 Beams
- WV21-10 Beams



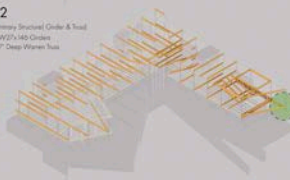
A.3

- Secondary Structure (Roof)
- WV21-122 Beams 30'-35'



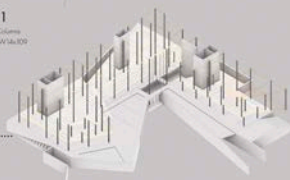
A.2

- Primary Structural Center & Truss
- WV21-146 Girders
- 7'-7" Deep Warren Truss



A.1

- Columns
- WV18-320



FACADE DEVELOPMENT

Louisiana Tech Student Center

Nathan Bucy
ARCH 520

North Elevation



East Elevation



South Elevation



West Elevation



North Elevation



East Elevation



South Elevation



West Elevation



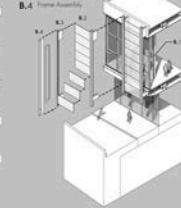
Facade Condition A

- A.1 Structural Glass Wall
- A.2 Laminated Safety Inter-Glass
- A.3 Fix-Motion System



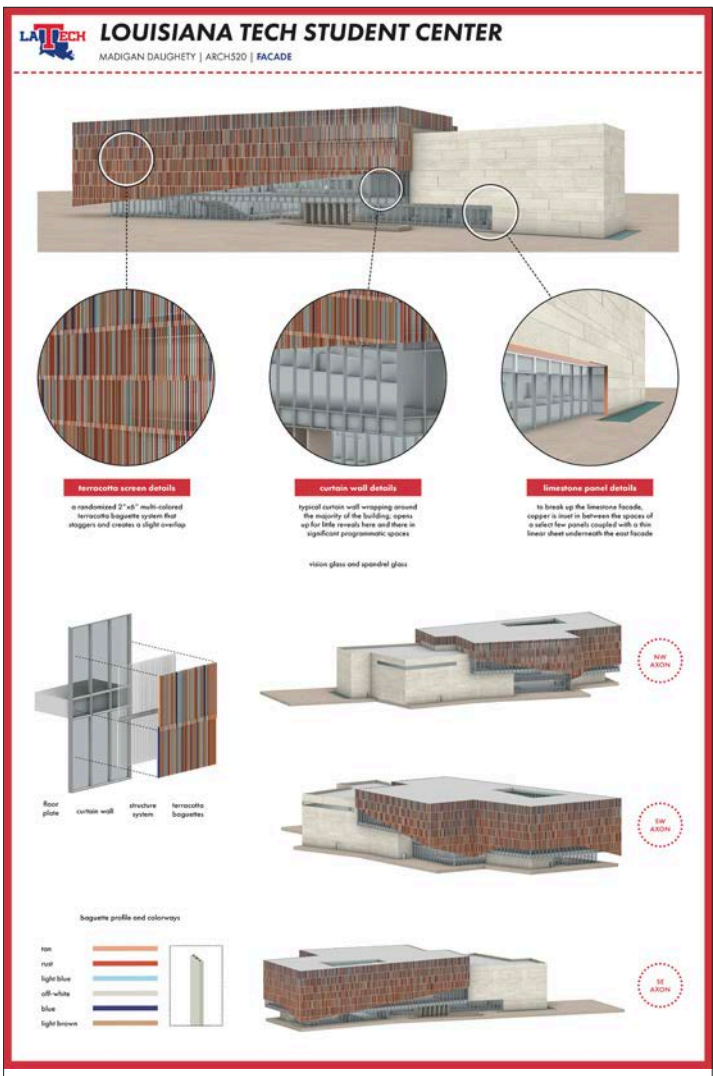
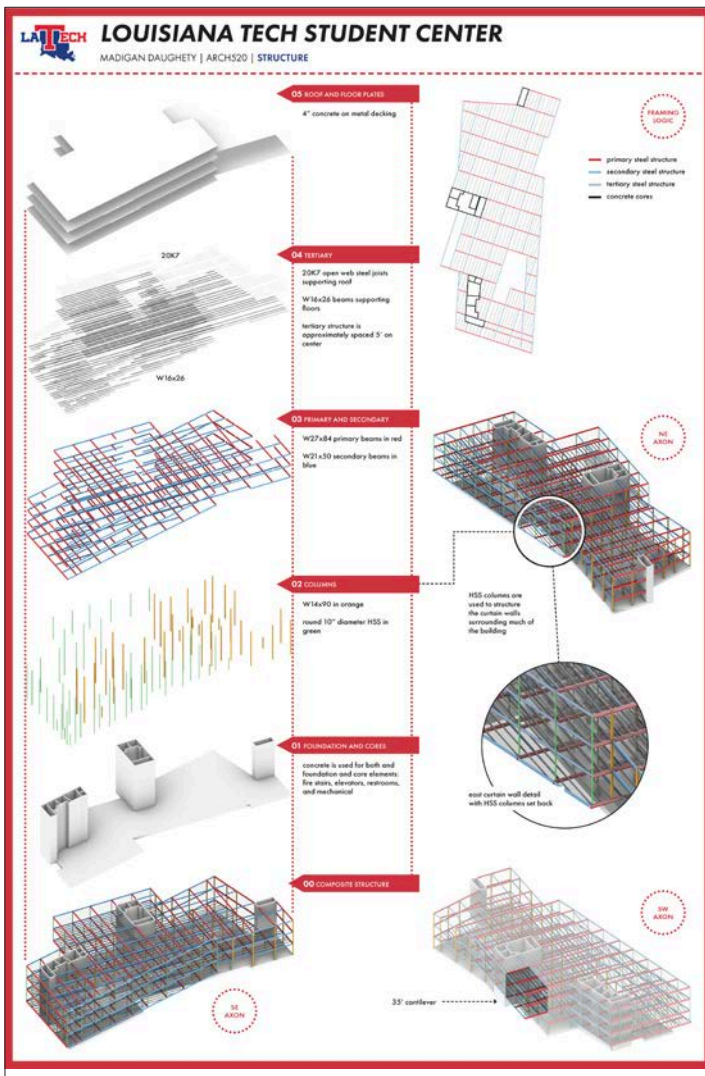
Facade Condition B

- B.1 Structural Glass Wall
- B.2 Safety Glass
- B.3 Glass Channel Structure
- B.4 Frame Assembly



Materials:





Structure and Façade Analysis
Megan Daughety

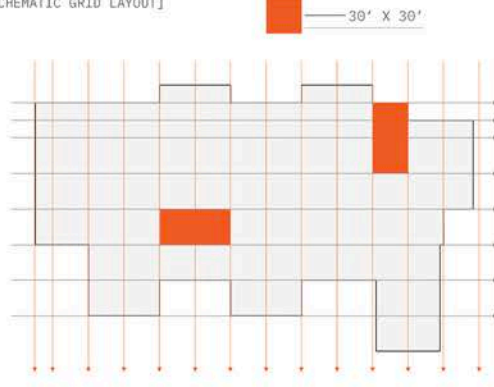
LOUISIANA TECH UNIVERSITY
NEW STUDENT CENTER



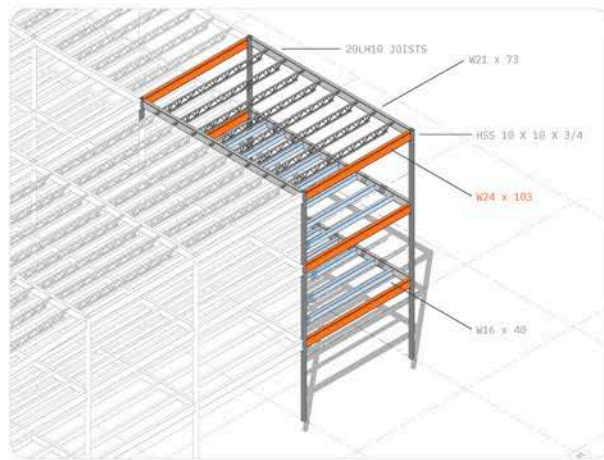
STRUCTURAL SYSTEMS

The building's structure is laid out in a 30' x 30' grid and fabricated of steel. The columns are 18" hollow square tube steel connected by a series of W-sections. Primary beams are W24 x 103, secondary beams are W21 x 73, and tertiary beams are W16 x 40. Roof joists are 20LH18 series bar joists.

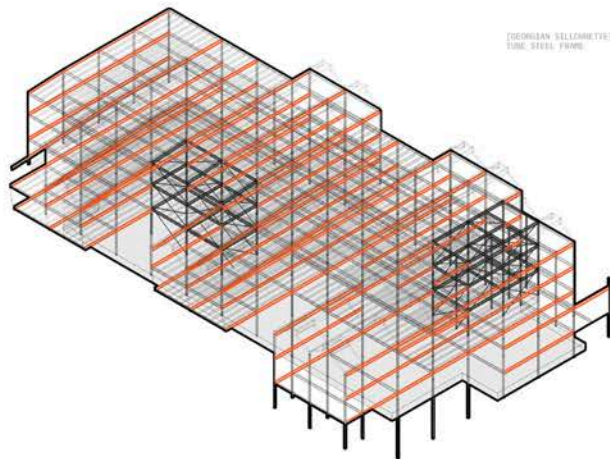
[SCHEMATIC GRID LAYOUT]



[COMPOSITE STRUCTURAL SYSTEMS]

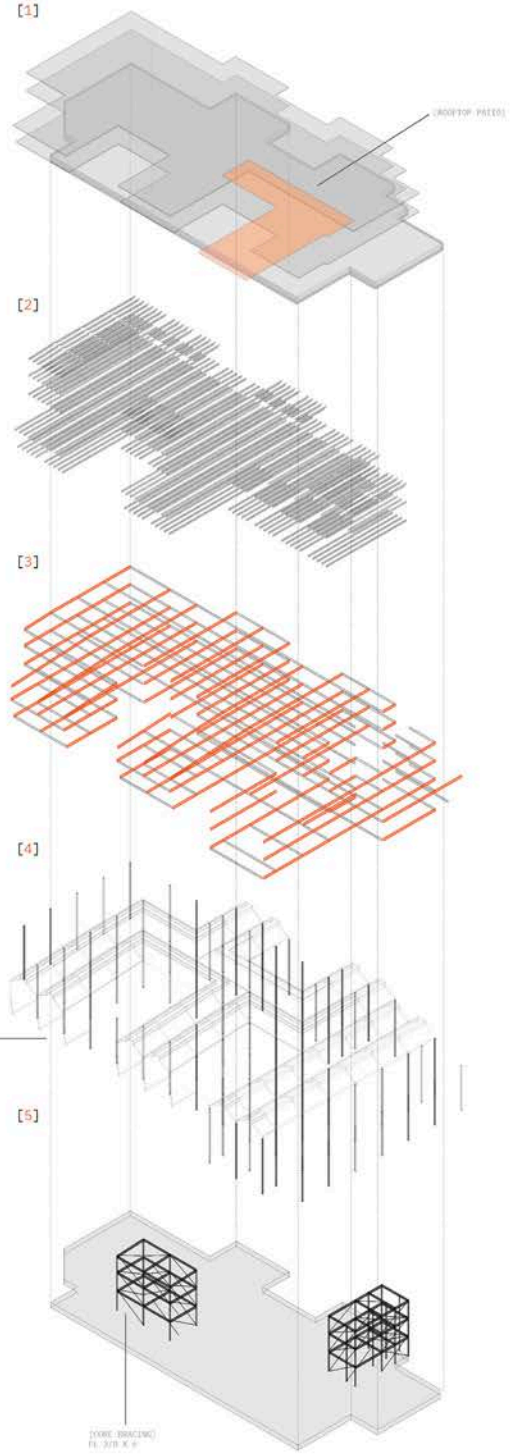


[COMPOSITE STRUCTURAL SYSTEMS]



[EXPLODED STRUCTURAL SYSTEMS]

- [1] FOUNDATION + CORES
CONCRETE SLAB
- [2] COLUMNS
HSS 10 X 10 X 3/4
- [3] PRIMARY AND SECONDARY STRUCTURE
W24 X 103
W21 X 73
- [4] TERTIARY STRUCTURE
W16 X 40
20LH18 JOISTS
- [5] FLOOR PLATES
18" CONCRETE
ON METAL DECK

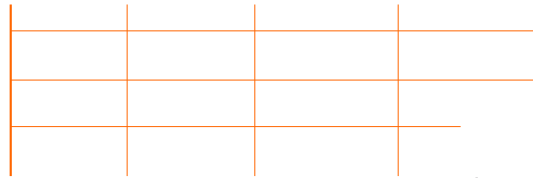


LOUISIANA TECH UNIVERSITY NEW STUDENT CENTER

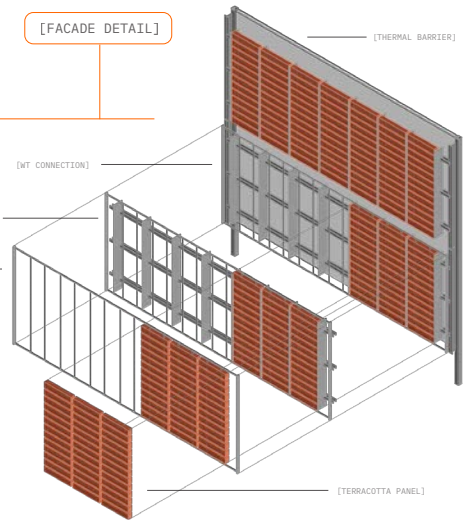


FAÇADE DEVELOPMENT

The building's façade is largely constructed of a terracotta and steel grate paneling system that is attached to structural members. The size and density of the terracotta panels will fluctuate and respond to the interior spaces of the building. Large operable shading systems are to be connected onto the building's glazed Eastern façade.



[FAÇADE DETAIL]



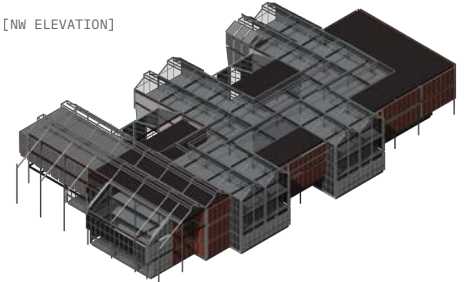
[PRECEDENTS]



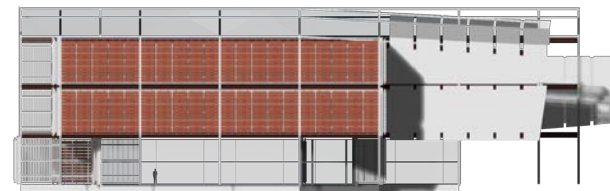
[NORTH ELEVATION]



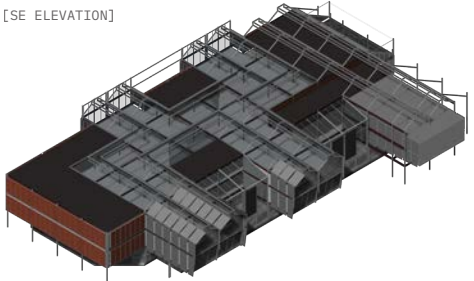
[NW ELEVATION]



[SOUTH ELEVATION]



[SE ELEVATION]



[WEST ELEVATION]



[EAST ELEVATION]



Ponzo W550 Curtain Wall

Viva Frameless Glass Guardrail

Patented Metal Panel

Rigid Insulation

3" x 4" HSS

Rib Support Plates
12" x 6" HSS Lateral Rib Bracing

Steel Stud Wall with Acoustic Insulation

Hallway Ramp

1 1/2" Terrazzo Floor
5" Concrete on Metal Decking
3" x 6" HSS Ramp Structure

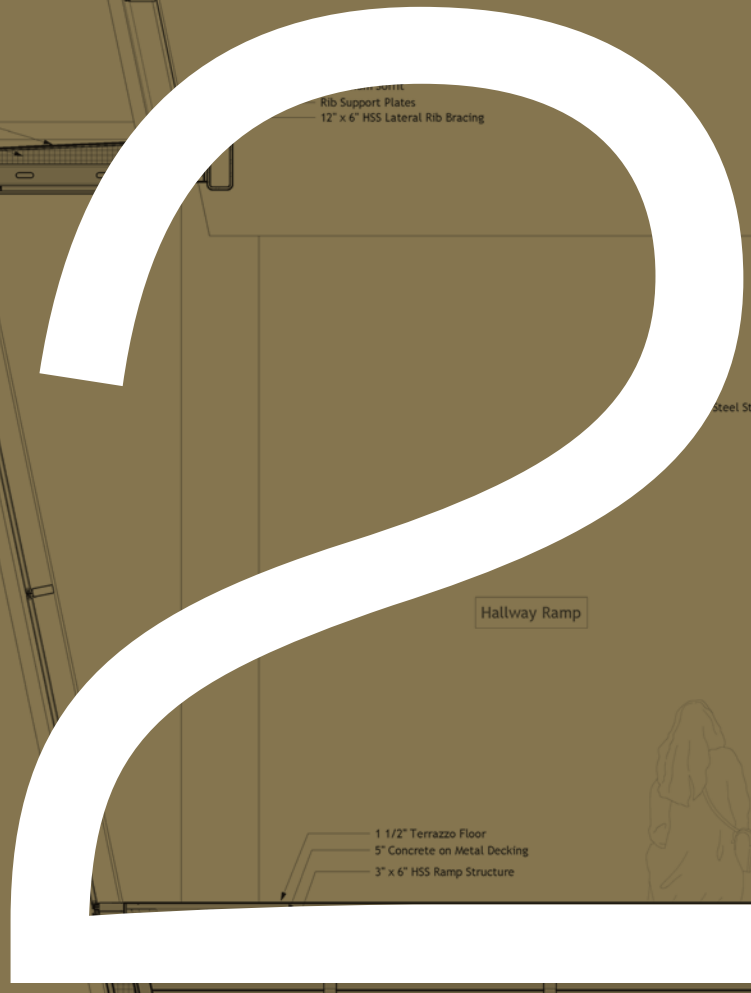
Parapet Coping
3 1/4" Cold Form Steel Frame
5" Rigid Insulation
Spandrel Glass
Frameless Glass Edge

Aluminum Soffit Panels
Solare Double Glazed
Frameless Storefront

6" Ø Can Lights TYP
Hanging Fluorescent Bar Light

Exterior Plynth (East Side)

Dining/Study



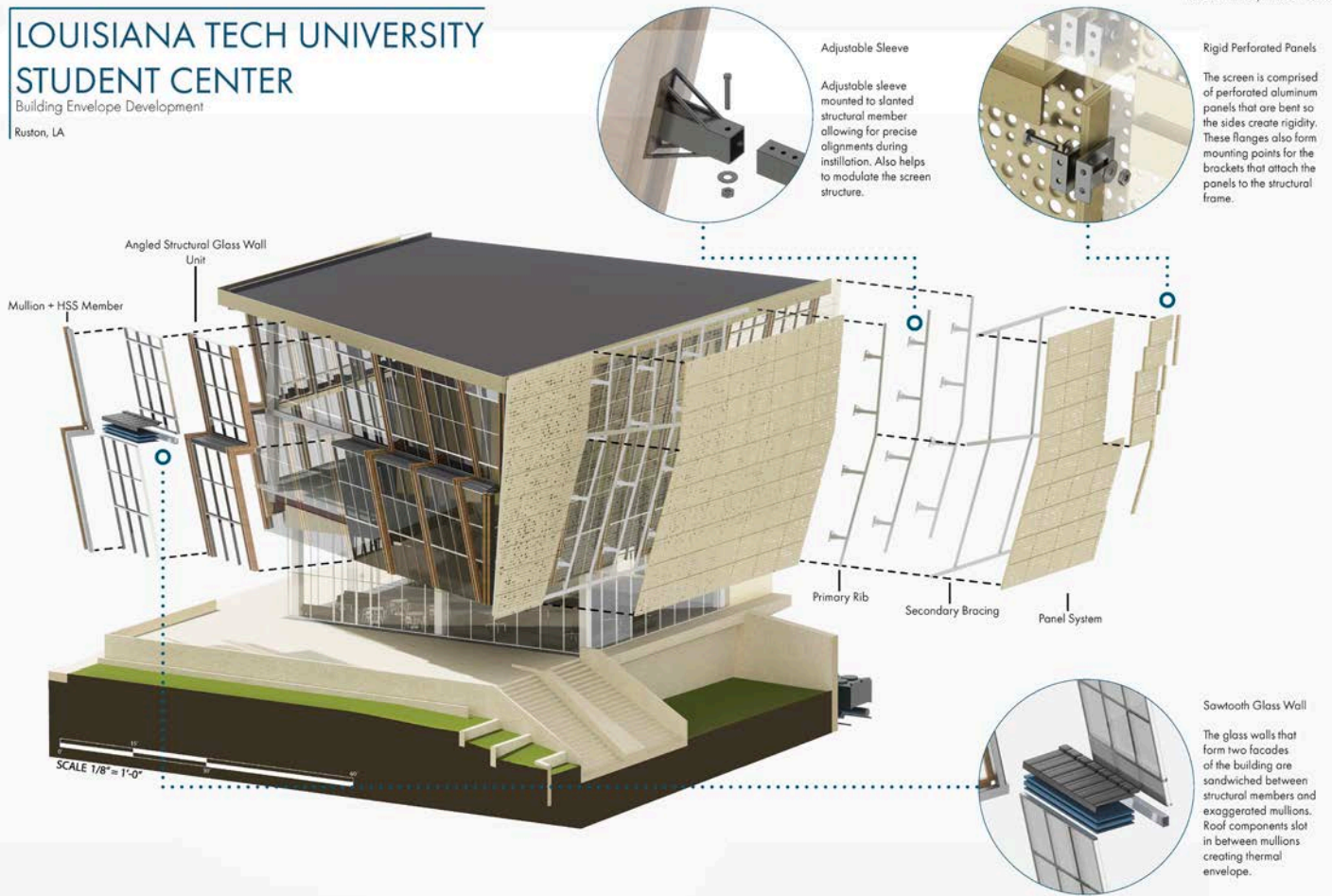
SECTION 2

ENVELOPE ASSEMBLIES

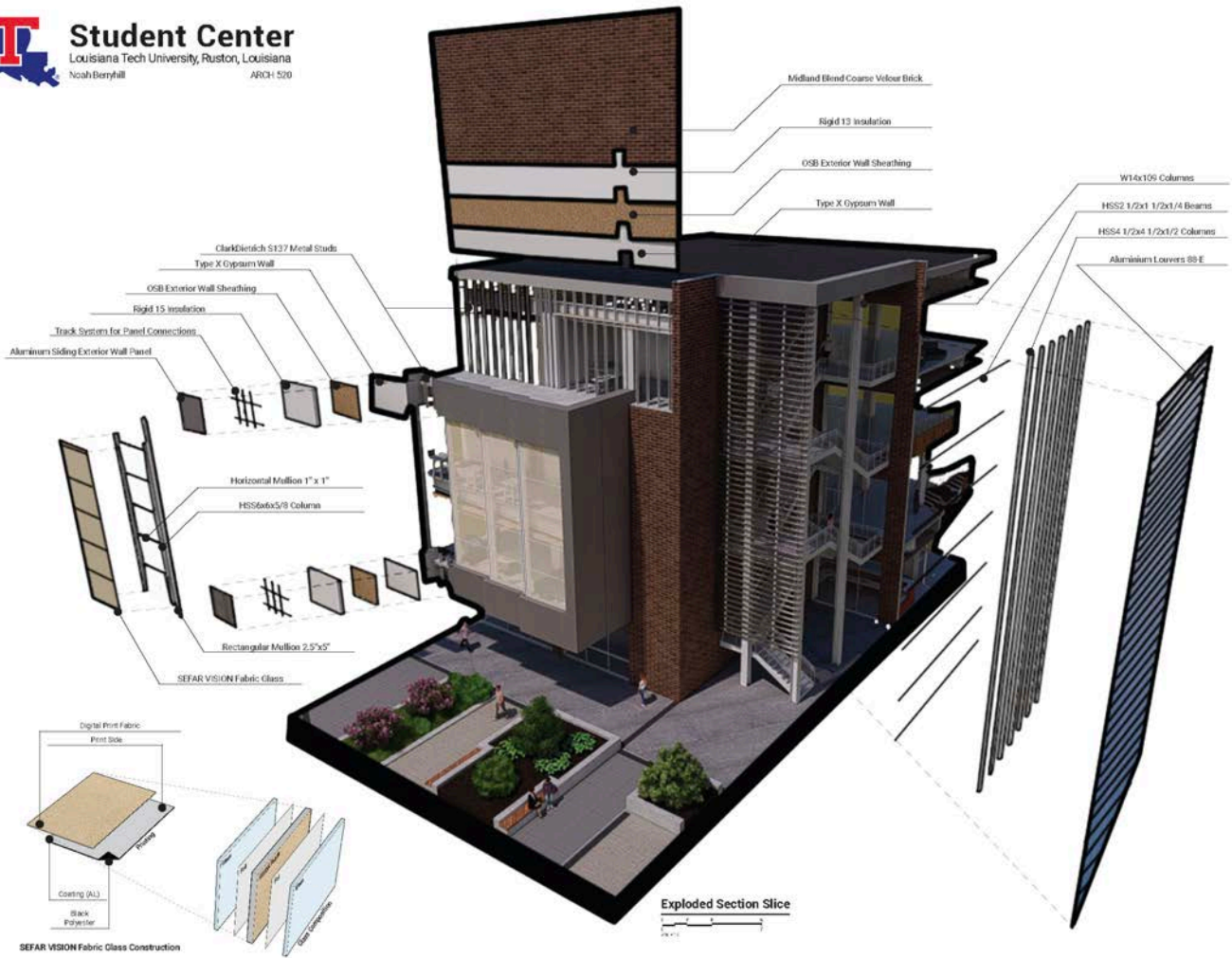
In this phase, students selected and enlarged a representative three-dimensional portion of their building to investigate how spatial, structural, and envelope systems worked together. This fragment was conceived as a layered assembly of technical and experiential elements forming a complex whole. The exercise facilitated the integration of exterior and interior, above and below, and the technical with the phenomenological. The solutions developed within this fragment were then applied to the entire building.

LOUISIANA TECH UNIVERSITY STUDENT CENTER

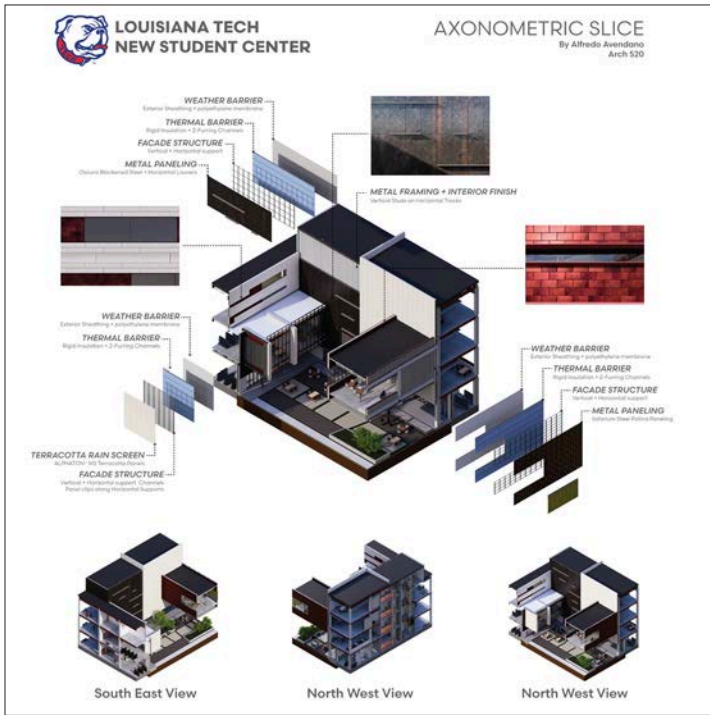
Building Envelope Development
Ruston, LA



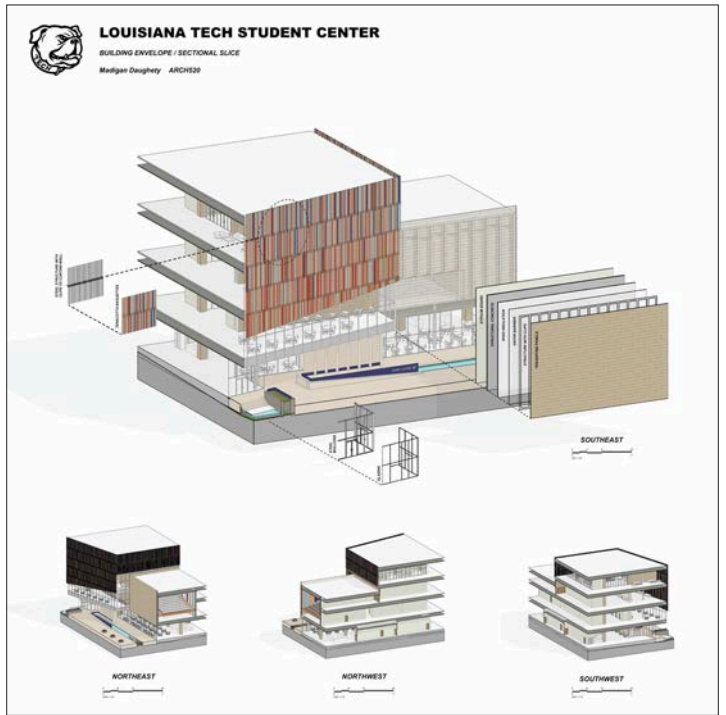
Nathan Bucy



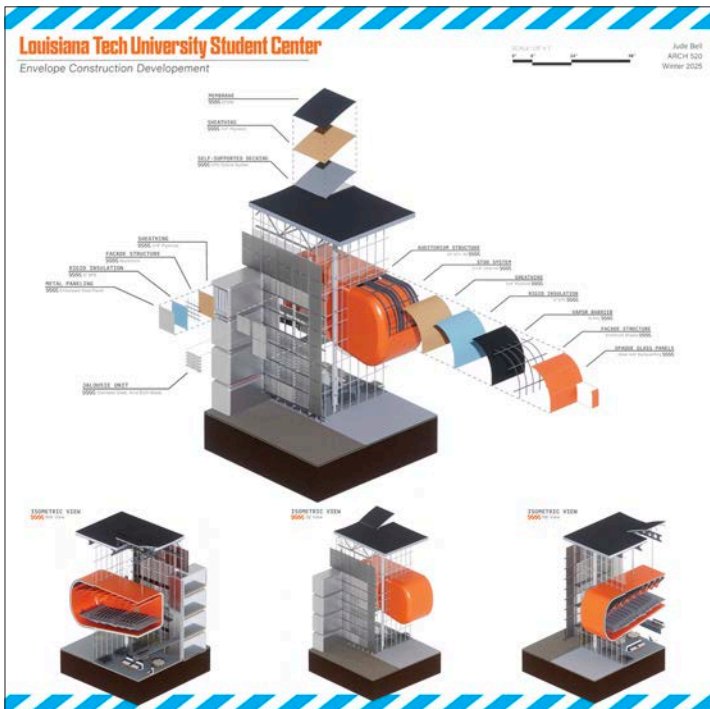
Noah Berryhill



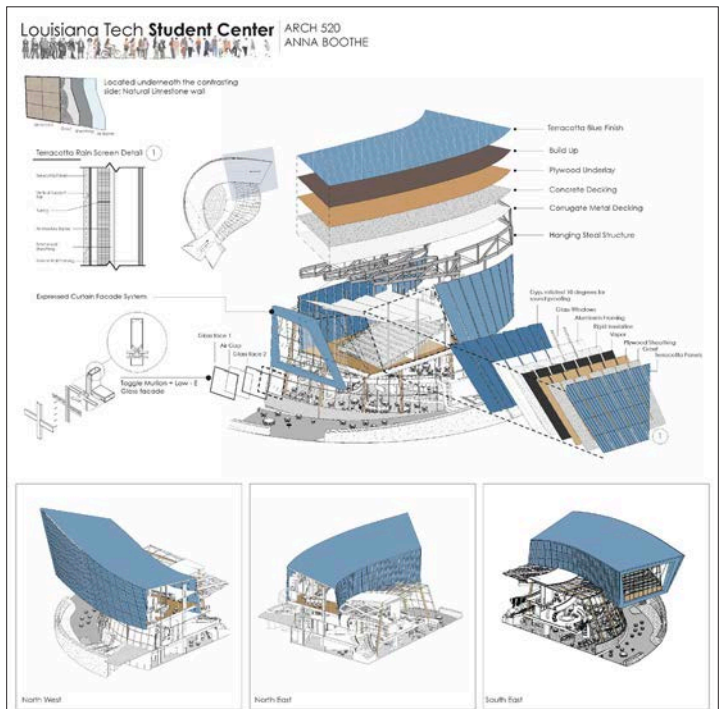
Alfredo Avendano



Madigan Daugherty



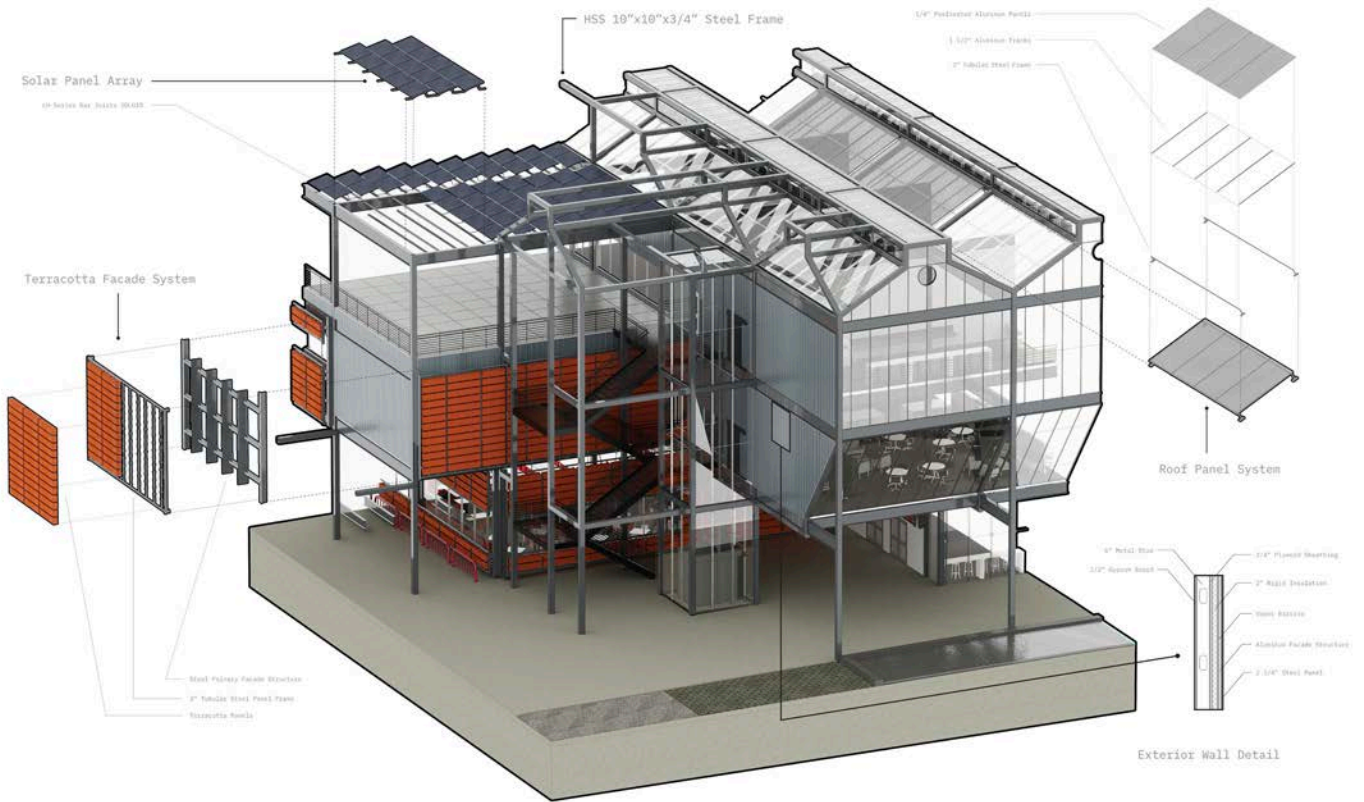
Jude Bell



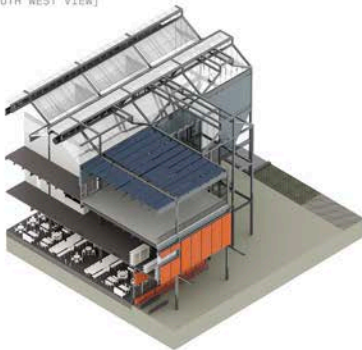
Anna Boothe

LOUISIANA TECH UNIVERSITY
NEW STUDENT CENTER

SECTION SLICE



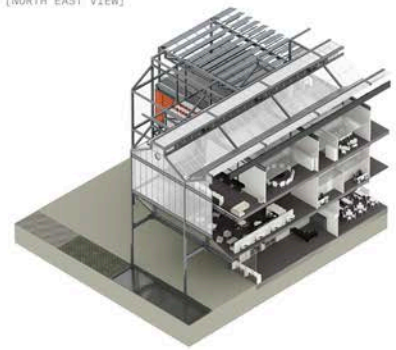
[SOUTH WEST VIEW]



[SOUTH EAST VIEW]



[NORTH EAST VIEW]



Logan Jacobs

3

Drip Edge

DINING AREA

Rigid Insulation
Plywood Sheathing
Metal Stud Framing

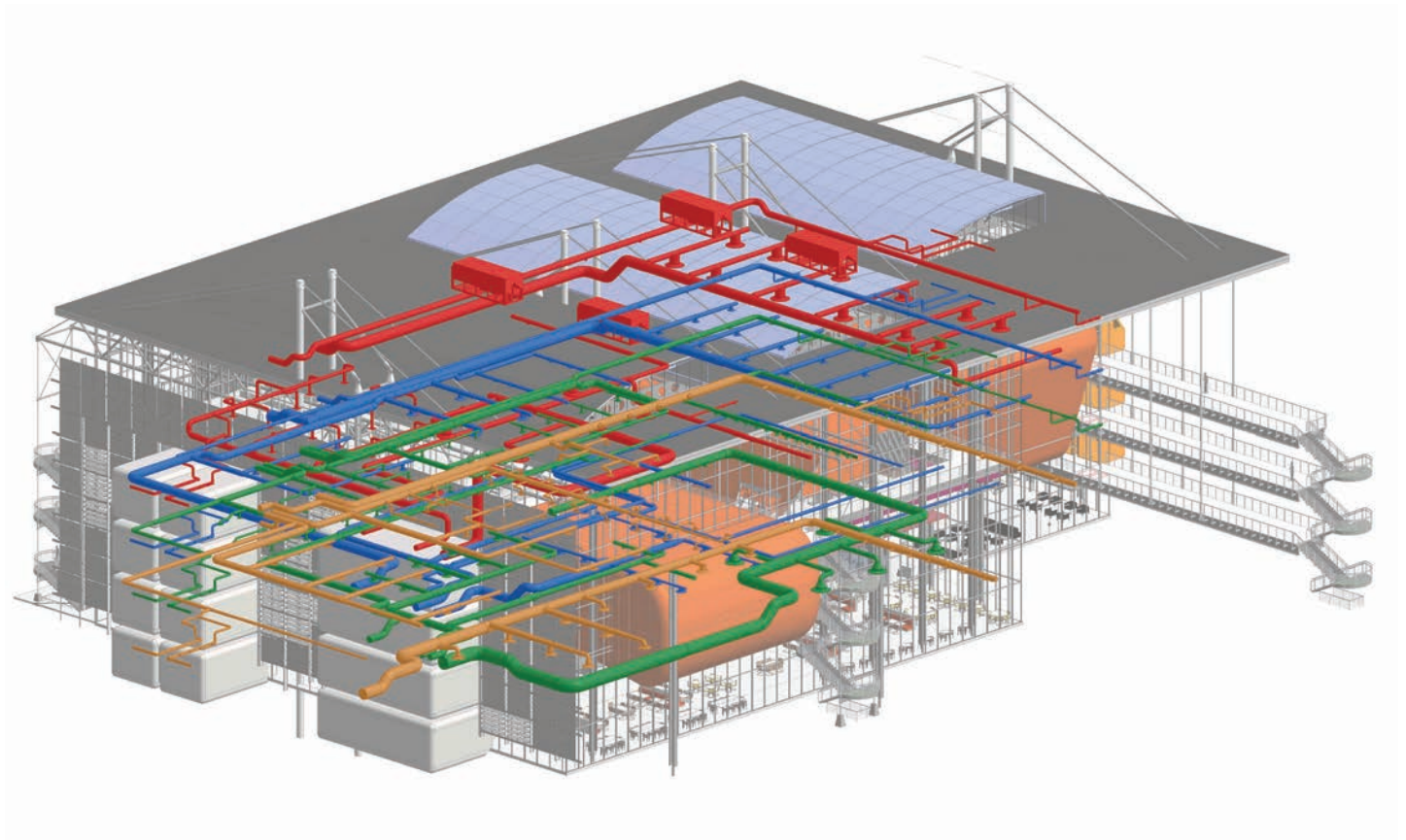
Ceramic Granite
PTS Fixing Clip

Concrete
Pavers
Sand

SECTION 3

HVAC LAYOUTS

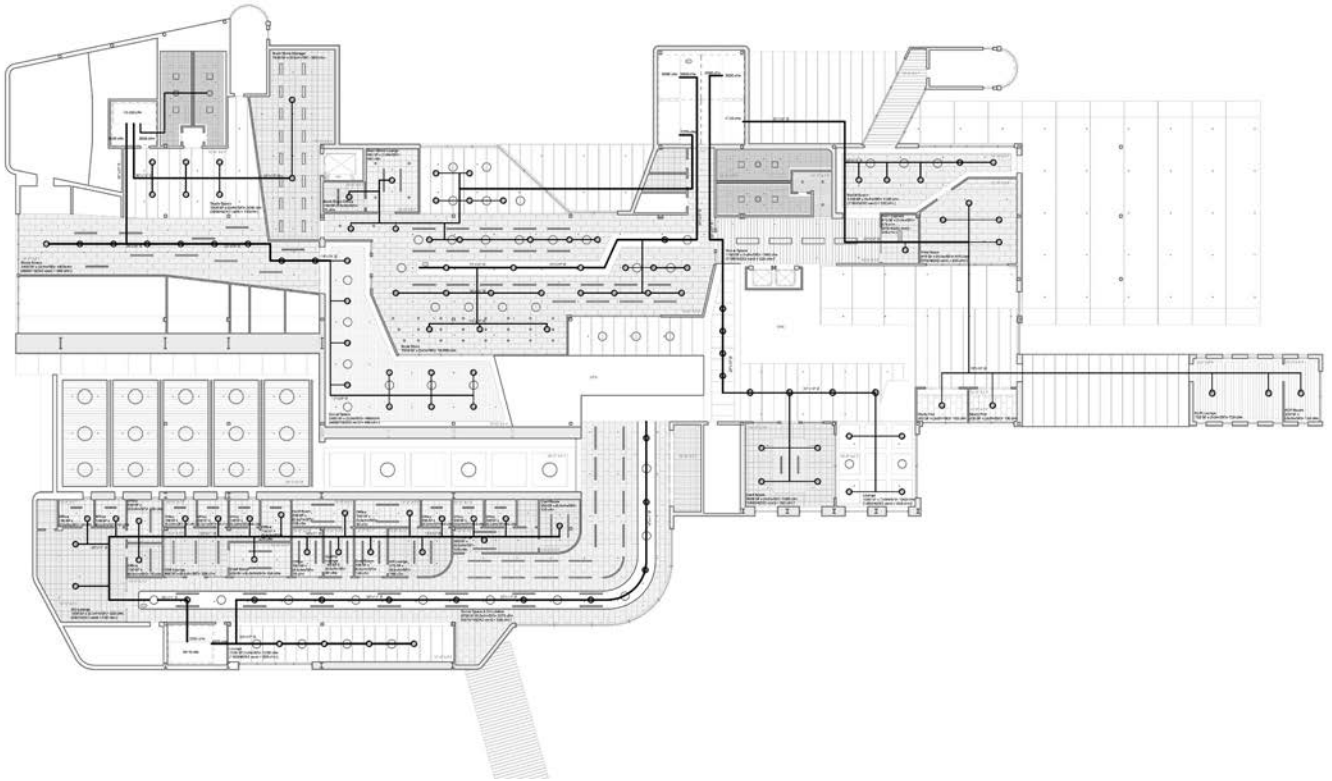
In this phase, students worked through an iterative process to determine their building's system requirements. They developed an understanding of how program, occupancy, and system loads related to the sizing of main units and zones. From this, they created branching diagrams showing air distribution, which included balancing loads, sizing ducts, and establishing distribution logic for various diffusers. This understanding of system sizing and logic directly informed the interior design of soffits and ceilings.



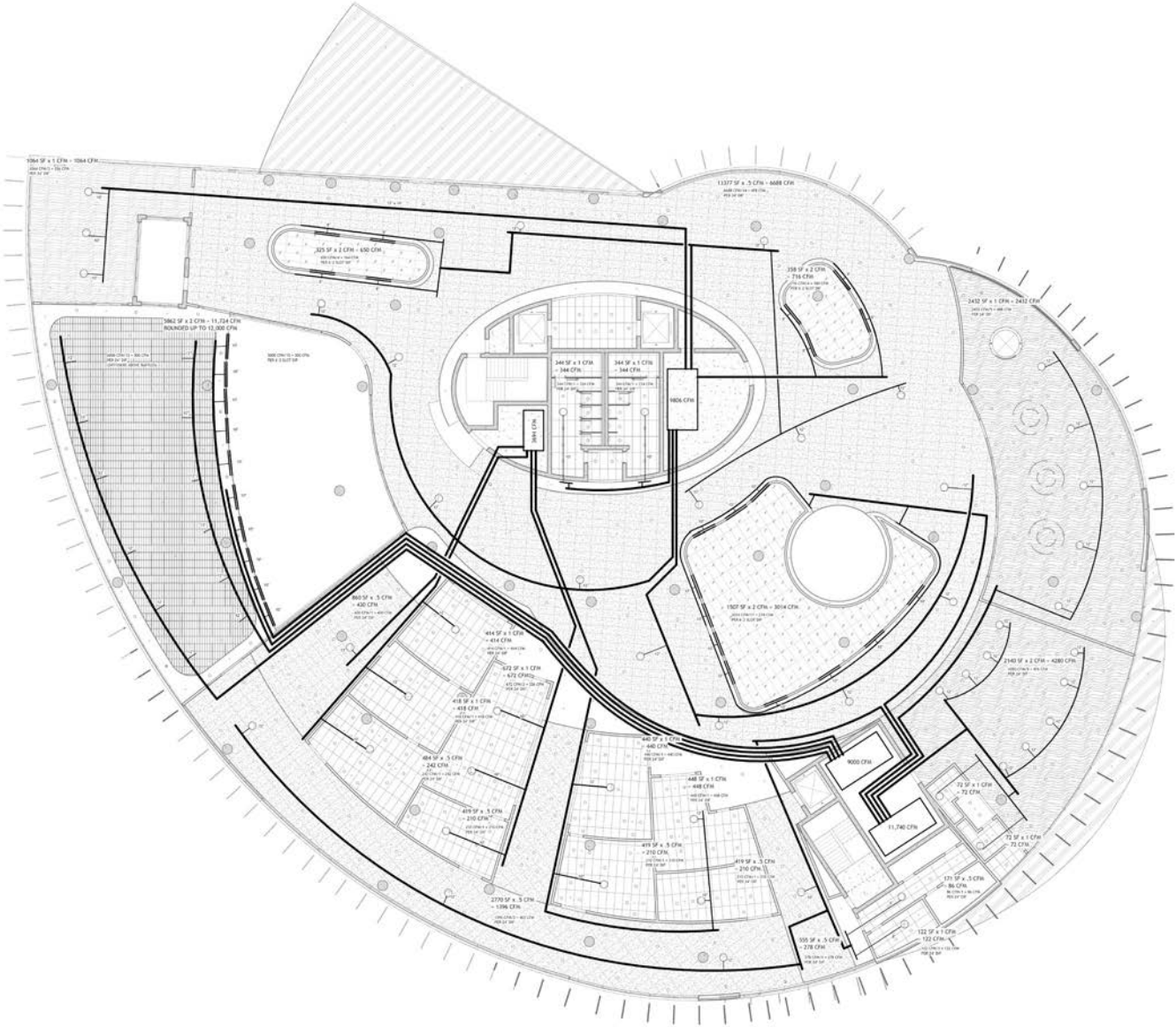
Jude Bell



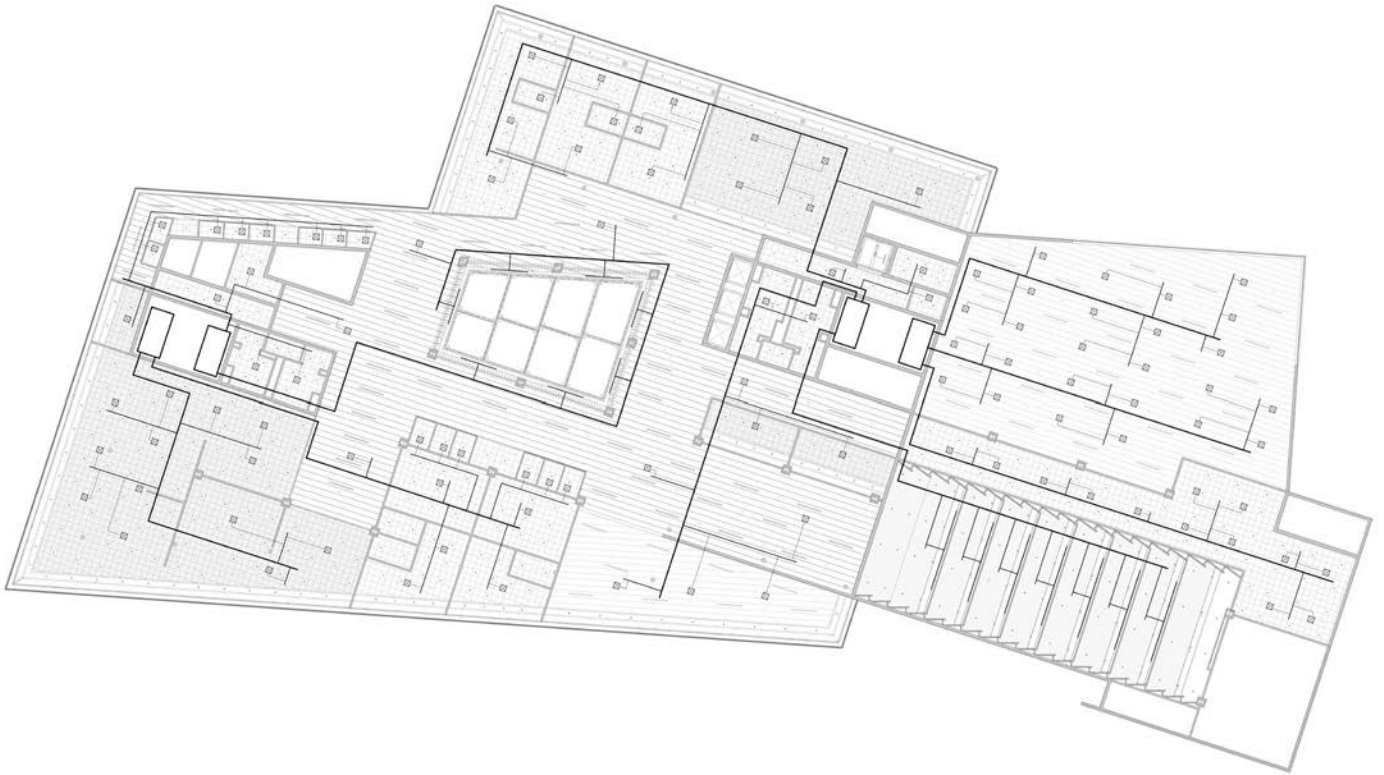
Noah Berryhill



Christian Salazar



Amber McMillan



Madigan Daughety

EXTERIOR ROOF DECK

- VERTICAL HSS MOMENT FRAMING
- HORIZONTAL HSS MOMENT FRAMING
- FACADE CLIP SYSTEM
- G.F.R.C FACADE PANEL
- DECK PAVERS
- DECK PEDESTAL
- T.P.O
- WEATHER BARRIER
- RIGID INSULATION
- CONCRETE PAN JOIST STRUCTURE
- ROOF DRAIN

- G.F.R.C FACADE PANEL
- TYP. ALUMINUM FRAME WINDOW
- TYP. 9 ALUMINUM ENTRY DOOR

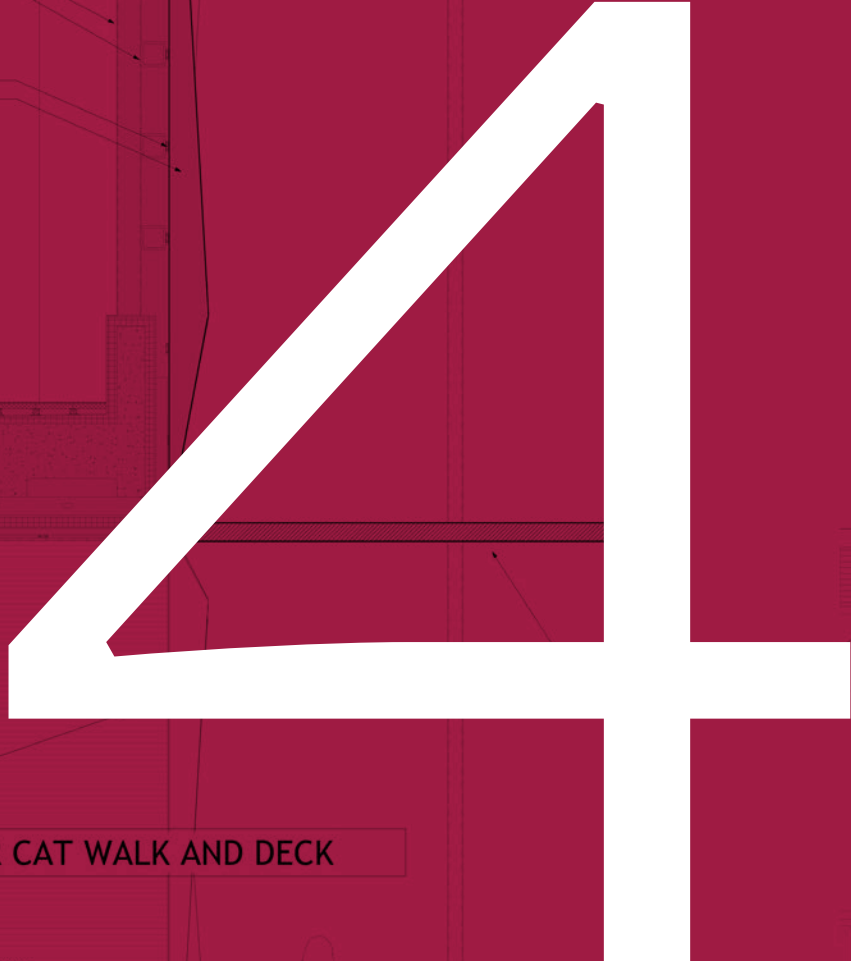
EXTERIOR CAT WALK AND DECK

- DECK PAVERS
- DECK PEDESTAL
- T.P.O
- WEATHER BARRIER
- RIGID INSULATION
- CONCRETE PAN JOIST SLAB
- ROOF DRAIN

- 6" HSS COLUMN
- VIA BEACON GLASS INFILL GUARDRAIL
- EXPANDED METAL MESH DECKING
- W16X33 STEEL BEAM FRAME
- W16X50 STEEL BEAM STRUCTURE

- GYPSUM BOARD SOFFIT
- CONCEALED SPRINKLER HEAD
- SPRINKLER SYSTEM
- HORIZONTAL SUPPLY AIR VENT
- HVAC SYSTEM
- LIGHTWEIGHT METAL CEILING FRAMING
- EXPANDED METAL MESH PANEL SYSTEM CABLE
- 2" X 4" EXPANDED METAL MESH PANEL

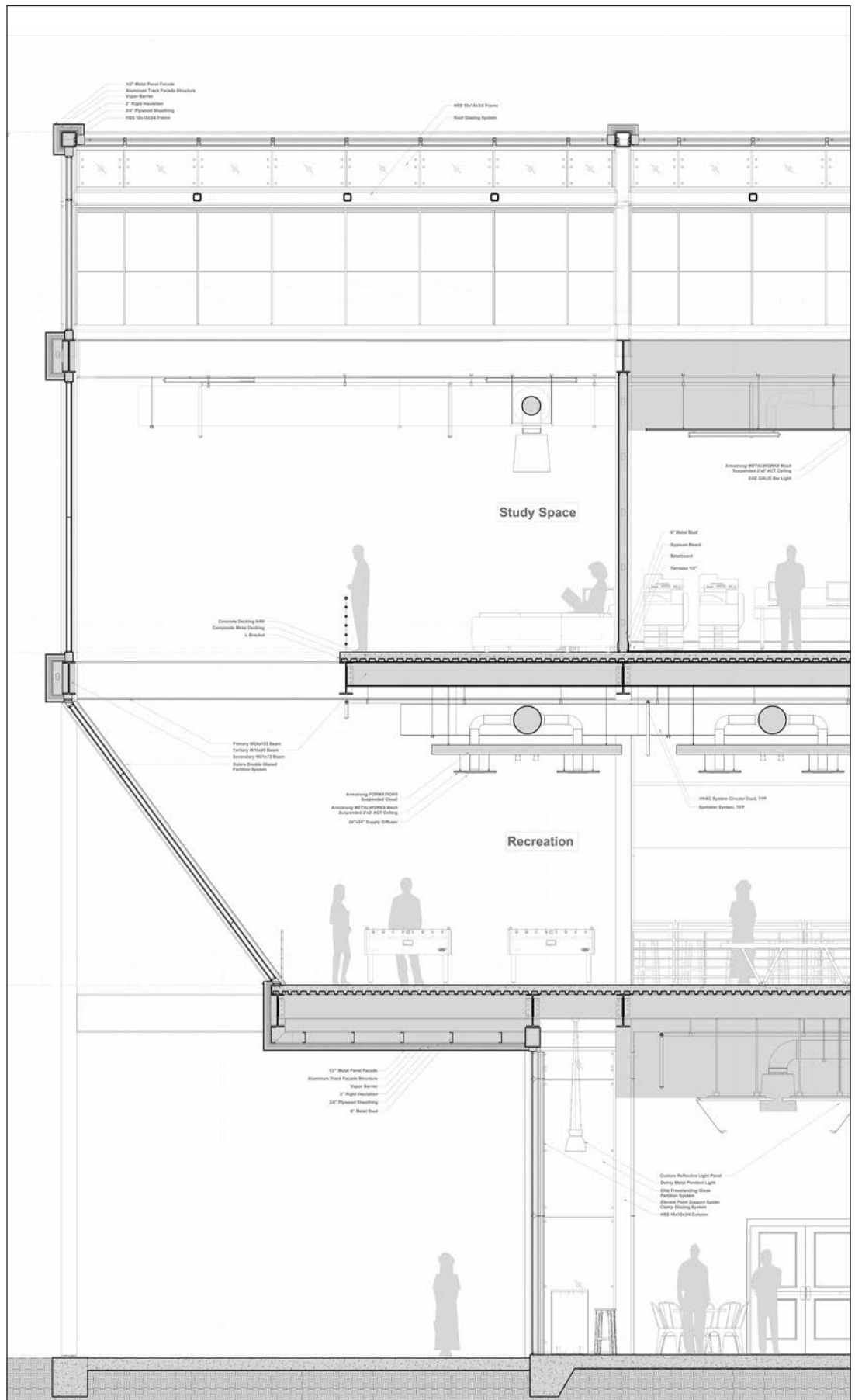
DETAIL 001



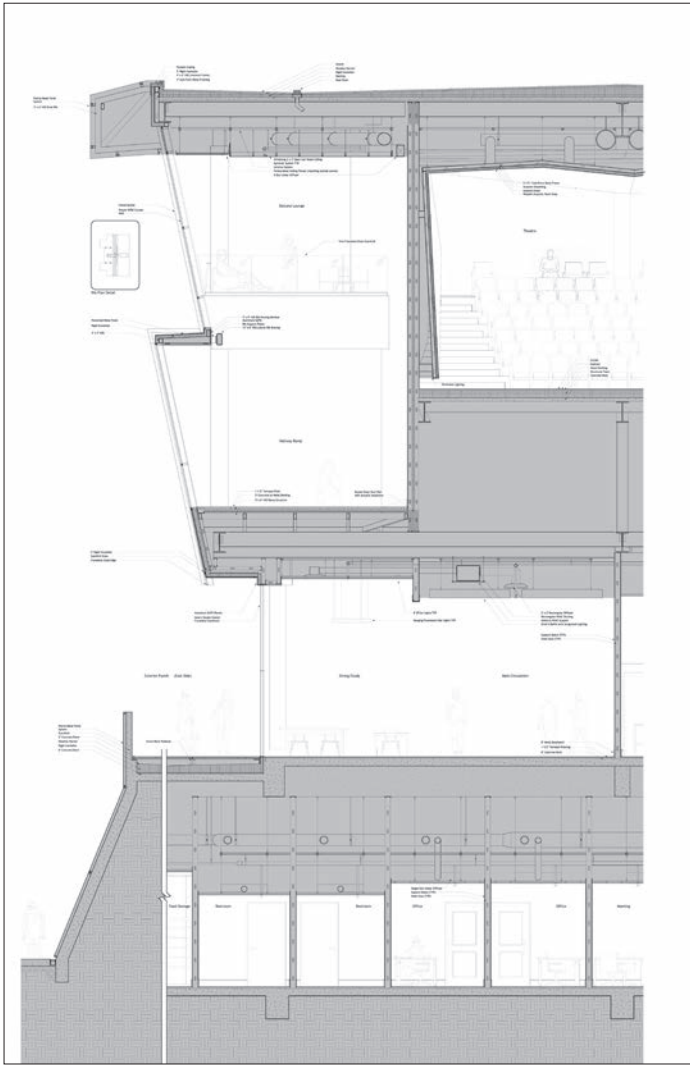
SECTION 4

FAÇADE SECTIONS

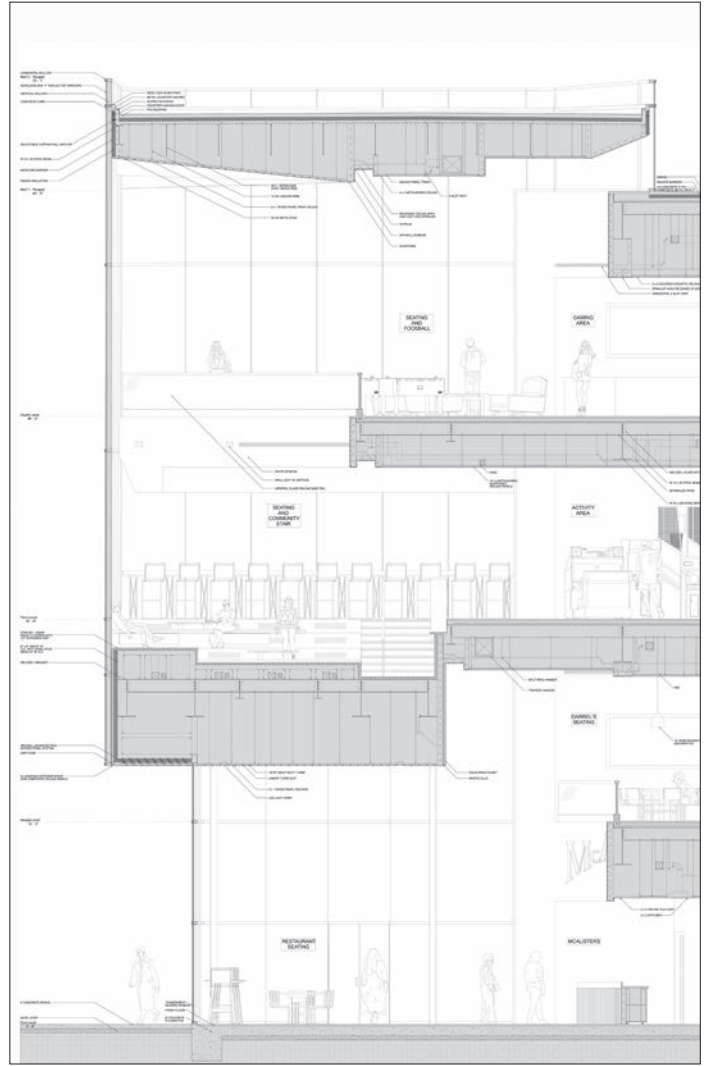
In this phase, students created several large-scale ($3/4'' = 1'-0''$) wall sections and façade elevations for key parts of their design. The goal was to examine and articulate the material, connection, structural, and tactile qualities of the building, both inside and out. At this scale, students integrated systems such as lighting, HVAC, and fire suppression with the developing structural and envelope details. This process provided a deeper, more immersive understanding of the building's construction and, as before, involved both group and individual meetings with consultants.



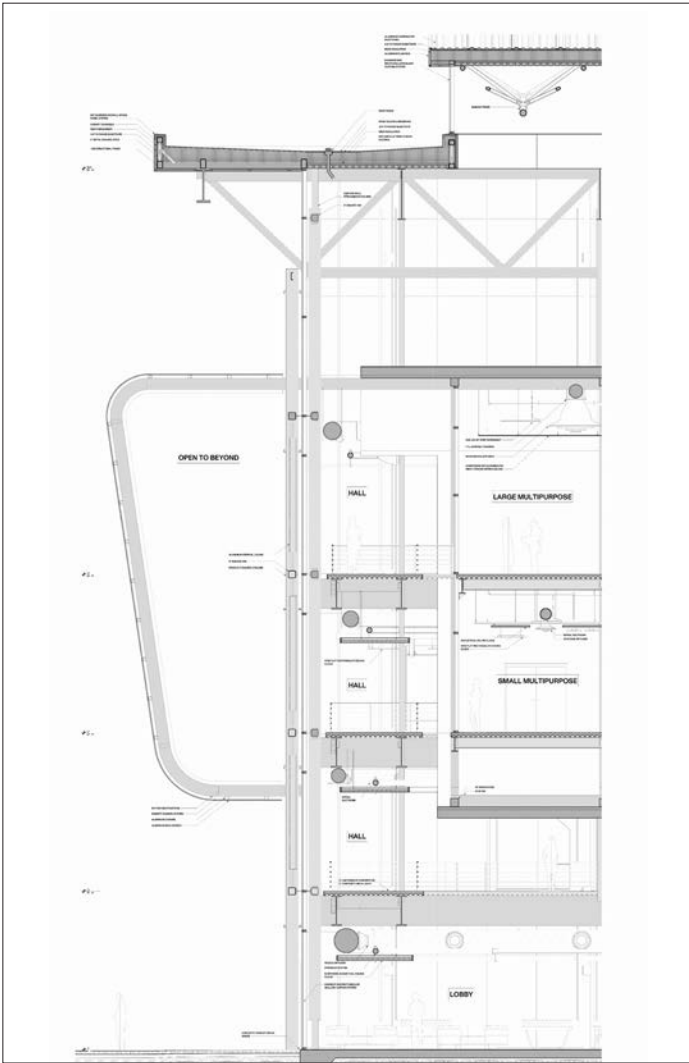
Logan Jacobs



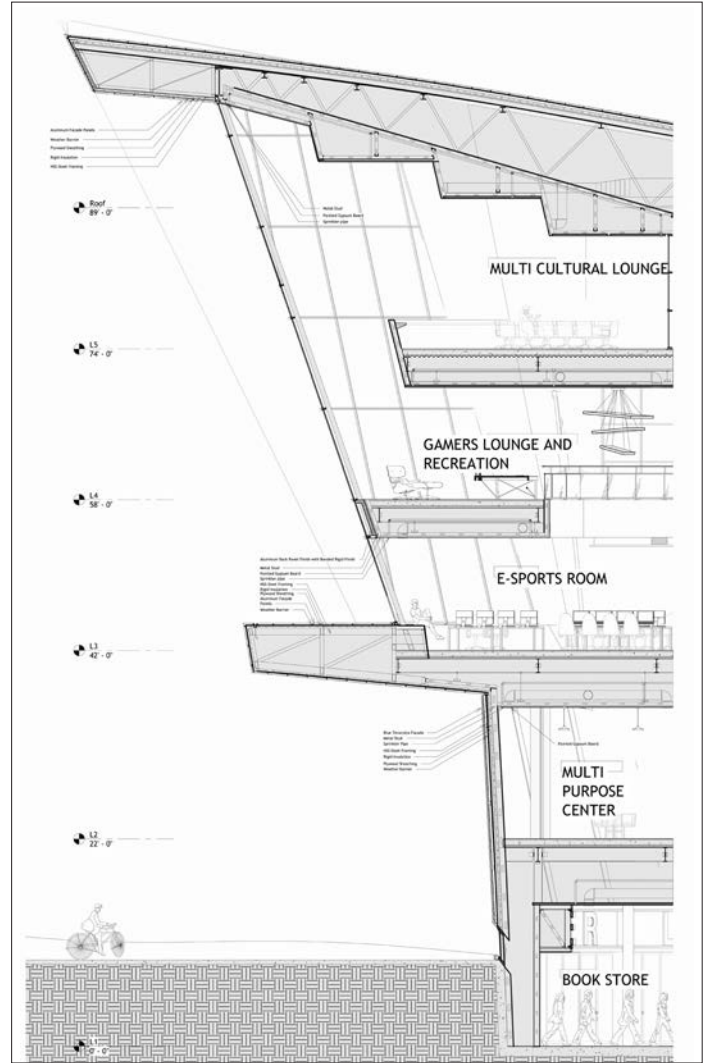
Nathan Bucy



Noah Berryhill



Jude Bell



Anna Boothe



Column Behind
HVAC Behind
Armstrong 2' x 2' Open Cell Wood Ceiling
2' x 4' Flush Mounted Fluorescent Lighting

Medium Multipurpose Room

Steel Plate
6' x 8' HSS Window Frame
Aluprof Storefront

Spandrel Glass
1/2" Steel L Plate
Rigid Insulation
Aluminum Soffit Panels

ed
ig
2'x2' Open
em (EYP)

Barnes and Noble

Exterior Plynth (South Side)

Column Behind
Terrazzo on 8" Concrete Deck

2' Concrete Paver Drain
Concrete Deck
Screw Deck Pedestal

High Bay LED Lighting for Storage

SECTION 5

FINAL WORK

This selection of projects demonstrated the depth of the designs and the variety of solutions achieved. Through collaborative assembly, students channeled their individual architectural interests into unique, well-considered outcomes. The final presentations, ranging from detailed drawings to animated walkthroughs, effectively communicated the complexity and richness of each project.



Scan the QR code to see animated walkthroughs on YouTube.



Student Center, Rear Facade
Nathan Bucy







Student Center, Quad View
Jude Bell





Student Center, Quad View
Emma Wyatt





Student Center, Northwest Approach
Diamond Nevills

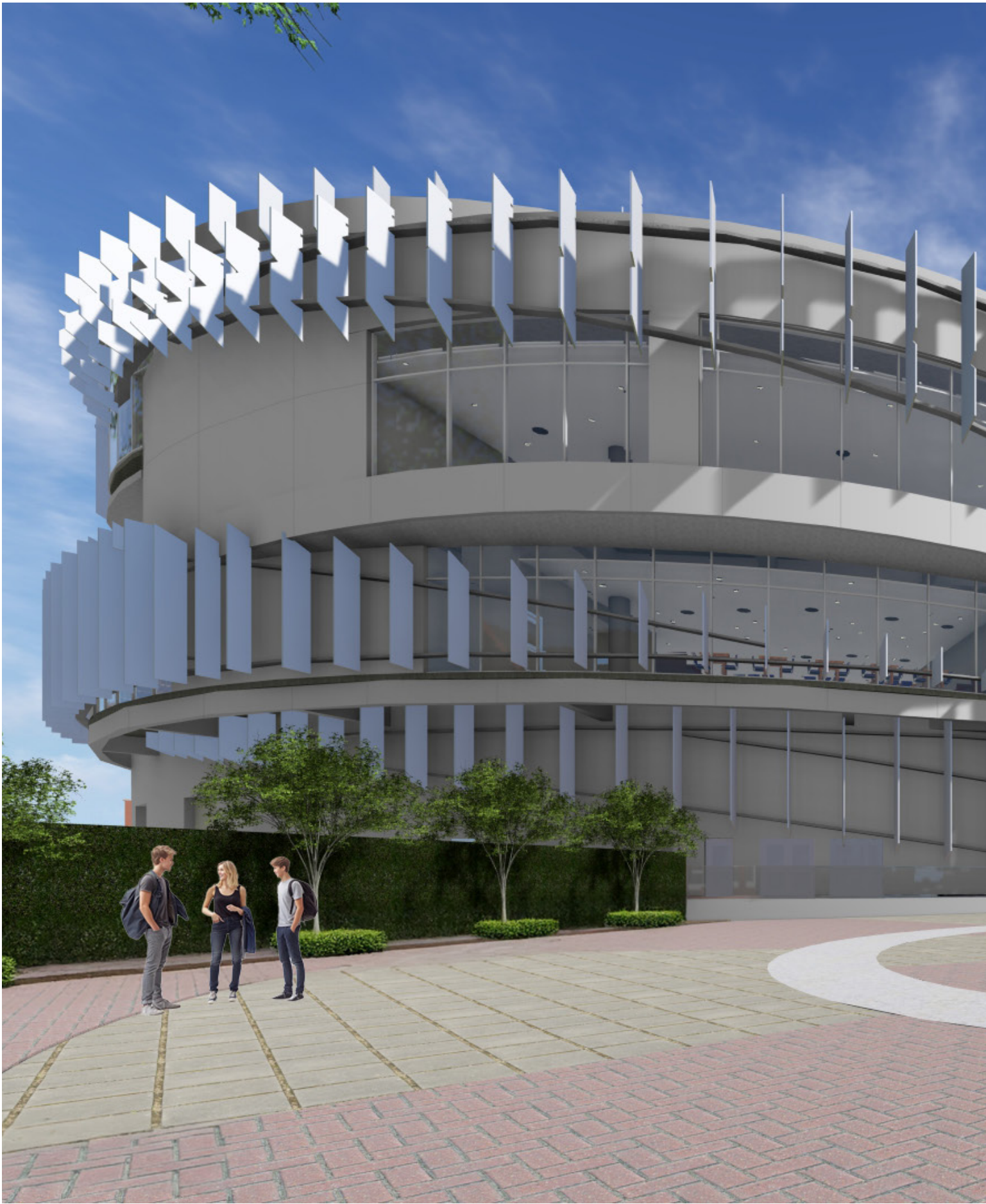


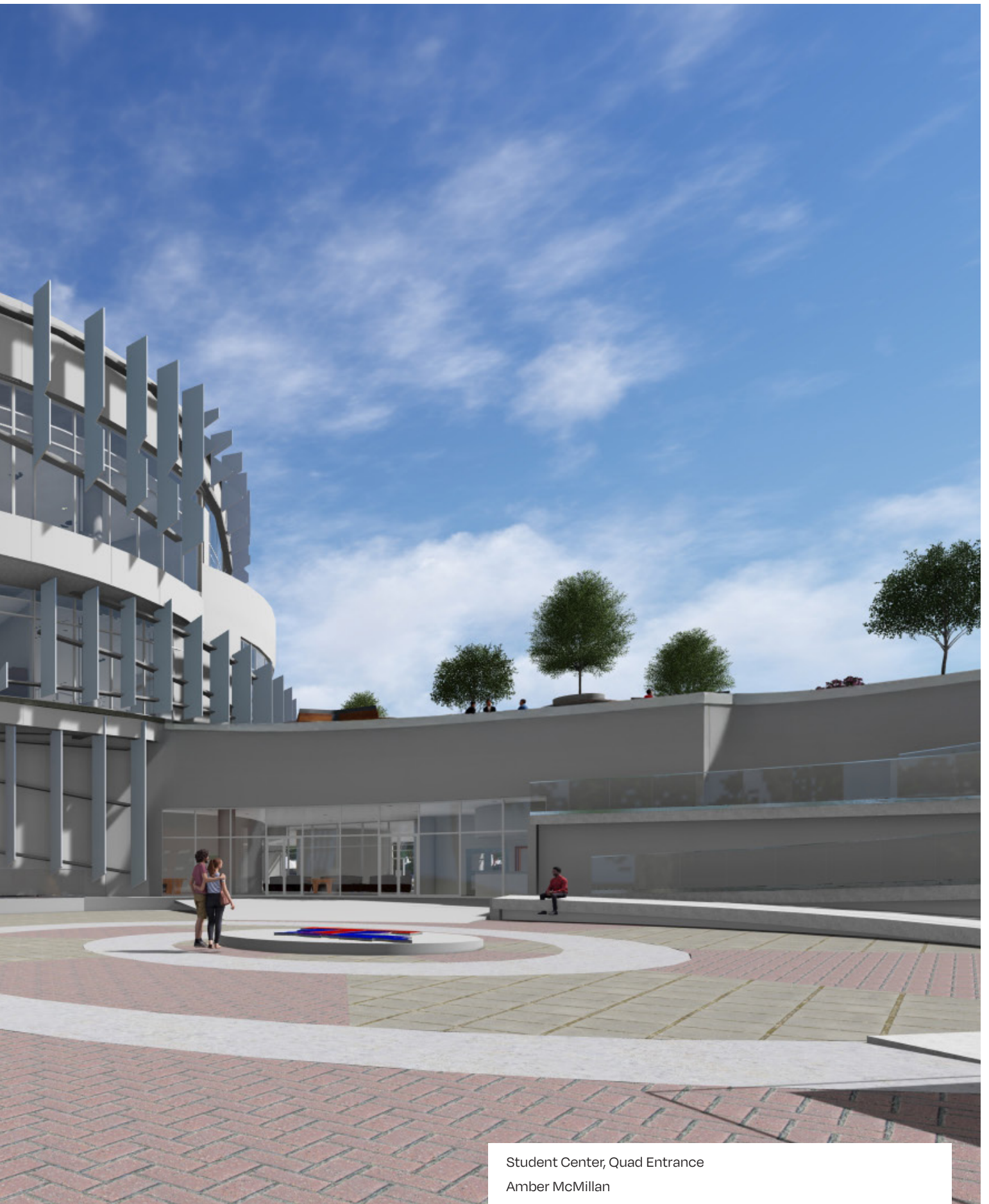
Student Center, South Facade
Madigan Daughety



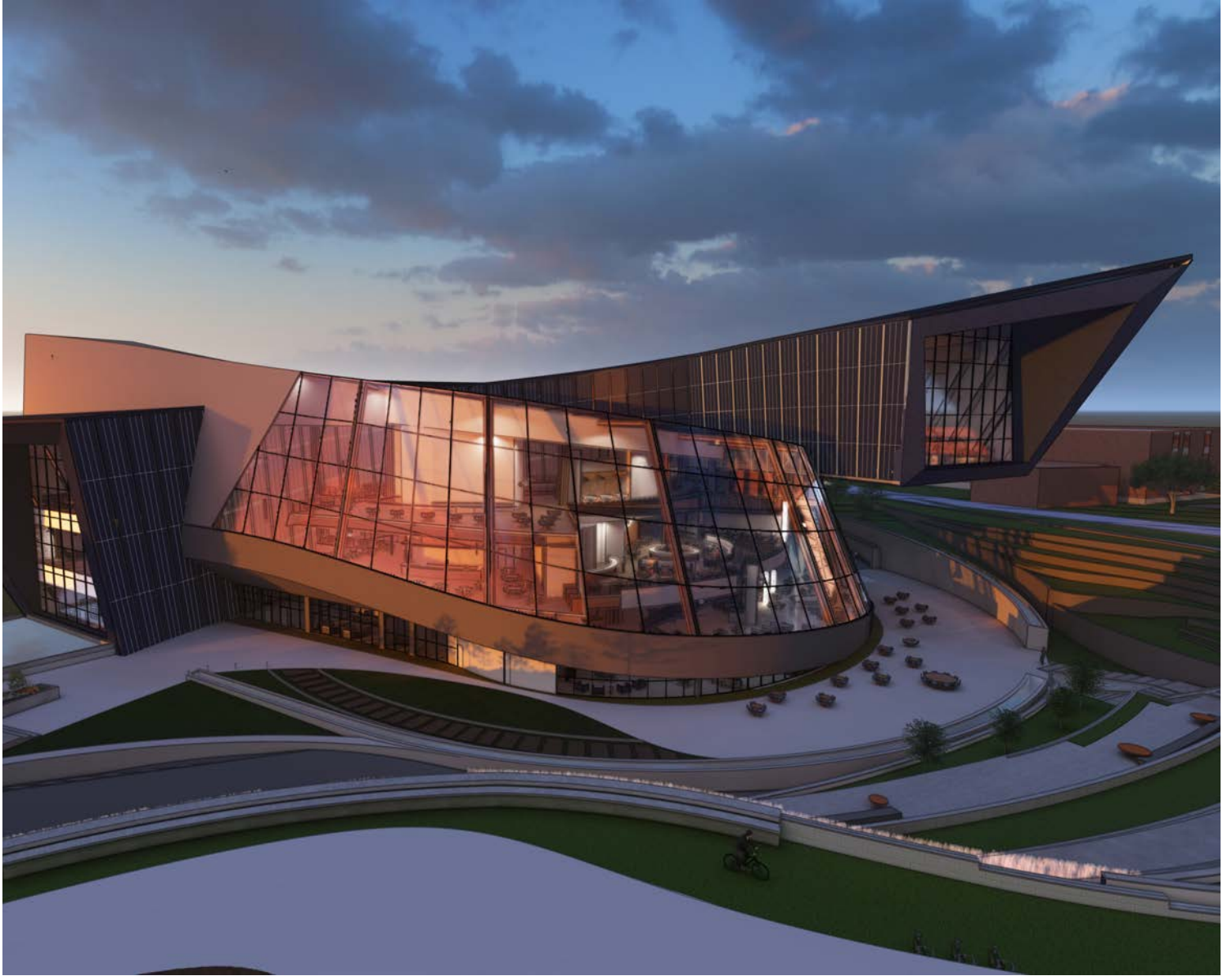
Student Center, Southeast Approach
Christian Salazar



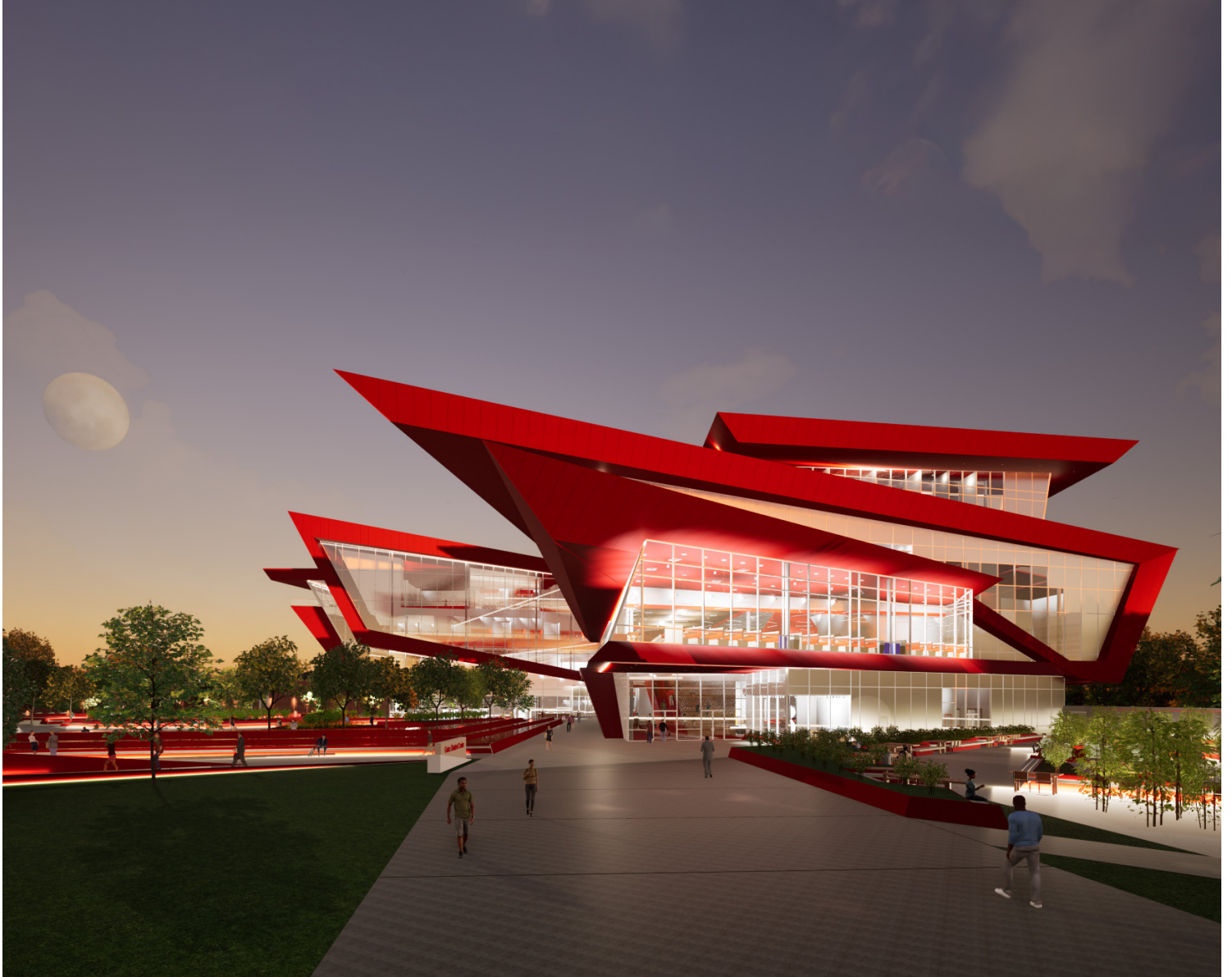




Student Center, Quad Entrance
Amber McMillan



Student Center, Quad Entrance
Anna Boothe



Student Center, Bridge Approach
Ashley Putman







Student Center, Lobby
Ashley Putman

Conclusion

Collaboration is at the heart of preserving and enhancing ideas, imagination, and design poetics through integrative design assemblies. The selection of work presented here reflects this collaborative approach, showcasing how intricate investigations of assemblies evolve into rich final designs. By fostering a pedagogy that values holistic knowledge rather than superficial aesthetics, we emphasize the importance of understanding building envelopes and structural technologies. This collaborative process turns technical knowledge into a powerful tool that enriches architectural intricacy and makes conceptual ideas tangible.

When students actively engage in this collaborative process, their work flourishes, leading to significant improvement in the technical understanding of our graduates. By integrating consultancy with contemporary practice methodologies through faculty like Bailey Craighead, our program has strengthened its connection to the architectural profession and highlighted the crucial role that consultants play in developing and realizing real-world architectural projects.

As we conclude this third year of the LSBAE-funded initiative, we acknowledge the dedicated work of Damon Caldwell in establishing and stewarding this program. Looking ahead to the 2025-26 academic year, Brad Deal will assume the role of Graduate Coordinator. Brad brings a distinguished record of achievement and recognition through Louisiana Tech's Design Build studios. Under his leadership, we anticipate continued innovation and growth in the program.

We want to offer a special thank you to the dedicated and talented students featured here as well as Brian Delaney, Robby Vogel, Damon Caldwell, Bailey Craighead, Tom Futrell, Brad Deal, and Dr. Pasquale DePaola. Without their efforts, this publication would not be possible.



Louisiana Tech University
School of Design

 design.latech.edu

 [latechsod](https://www.instagram.com/latechsod)



Louisiana Tech University
School of Design

Funding provided by The Mary "Teeny" Simmons Architectural Education and Research Fund,
implemented by The Louisiana State Board of Architectural Examiners



LAFAYETTE

Professional Pathways in Architectural
Education: Linking Learning, Licensure,
and Responsibilities

Architectural Research in Practice: *Community and Equity*

By Connor Lagarde

Robert McKinney

DSGN 495-001

University of Louisiana at Lafayette

Summer 2025

06-23-2025



"Architecture is never neutral. It either hurts or heals." - Michael Murphy (Founding Principal, MASS Design Group)

Introduction

The American Institute of Architects (AIA) has established a forward-looking research agenda to guide architectural practice in addressing the most pressing social, environmental, and technological challenges of our time. Framed across three scales of influence, the Occupant, Building, and Community, this agenda encourages architects to engage more deeply with the systems that shape human experience and planetary health. The emphasis on community-scale research interests me, particularly the theme of equity. The ability to shape our communities through design is an important one, and focusing on equity is the first step for it to truly become a community for everyone. Especially in times like these, I think we need a strong sense of togetherness and understanding.

This theme asks us to look beyond the form of buildings and into the systems of power they reflect and reinforce: housing segregation, environmental racism, underinvestment in public infrastructure, and barriers to mobility. Prioritizing community and equity is not only a moral imperative; it's essential to the relevance and resilience of the profession. As society demands more just and inclusive outcomes, architects must become advocates and collaborators, equipping ourselves with tools for participatory design, policy literacy, and systemic thinking. By centering equity at the heart of the design process, architects can help reshape cities into places where all people are valued, heard, and empowered. This is not a peripheral concern; it is foundational to the future of architecture, and I'm eager to learn and become inspired by how firms create a shape for that idea.

01 MASS Design Group

Located in Boston, MA ~ Focused on social equity and restorative justice

The role of design in the fight for justice and equity for all is at the core of MASS Design Group's mission. Supporting underserved communities to confront, heal, and imagine new opportunities has earned this not-for-profit group many awards, including the 2022 AIA Architecture Firm Award. The National Memorial for Peace and Justice and the Rwanda Institute for Conservation Agriculture are some of their most well-known, award-winning projects. Through many design labs, MASS has addressed issues such as fringe cities, native communities, deaf spaces and disability justice, and decarceration.

"Regeneration is required. It requires us to rethink how we design and it requires us...to work together, beyond buildings."
- Designing for a Thriving Planet (Rwanda Institute for Conservation Agriculture - MASS documentary)

Restorative Justice Design Lab



The Writing on the Wall exhibit at The Highline in NYC
Photo: Jeenah Moon

The Restorative Justice Design Lab (RJDL) at MASS Design Group works across sectors to reimagine the justice system through design rooted in healing, dignity, and community care. The lab supports efforts to end mass incarceration by designing new justice infrastructures, expanding mental health and re-entry services, and promoting restorative alternatives. RJDL engages directly with impacted communities to advocate for human rights and shift the narrative around criminality. Through design, research, and advocacy, the lab aims to replace punitive systems with spaces that support accountability, repair, and reintegration.

Ongoing Projects and Partnerships include:

- Freedom Libraries, a project in partnership with Dwayne Betts, recently awarded the MacArthur fellowship
- Restoring Promise, a collaboration with the Vera Institute for Justice and the MILPA Collective
- A publication on the Architecture of Prisons



Created in collaboration with artist Hank Willis Thomas and justice reform advocate Dr. Baz Dreisinger, **The Writing on the Wall** traveling exhibition highlights writings by incarcerated individuals as a powerful spatial experience. Designed to resemble prison cells, the installation invites the public to engage with over 2,500 personal letters, poems, and stories, shedding light on the often-invisible realities of incarceration. As part of their broader restorative justice work, this project underscores MASS's dedication to uplifting unheard voices and **using design to advocate for meaningful systemic change.**
Photo: UC Santa Cruz

02 Perkins&Will

Located in Chicago, IL ~ Focused on social/health equity and racial justice

Perkins&Will is dedicated to building a thriving community, exemplified through its Social Purpose program, which delivers pro bono design services to nonprofits serving critical human needs like housing, healthcare, and education. By extending architectural expertise to organizations that might otherwise lack access, the firm directly supports under-resourced communities. This initiative reflects a belief that design should serve the public good and foster inclusive environments. Beyond architecture, Perkins&Will staff also engage in grassroots volunteer efforts, from food pantries to community gardening, demonstrating a hands-on commitment to civic wellbeing. Their holistic approach blends professional service with human connection, making equity a lived practice across every scale of impact.

Social Purpose Program

Spearheaded by the non-profit Historic Boston Inc., the Fowler Clark Epstein Farm (built in 1768) went through a major renovation thanks to the pro bono work provided by Perkins&Will through their Social Purpose Program. The firm donated more than 1,000 hours of design services. Finished in 2018, the farm now has a thriving farmer's market and is a cornerstone of the community.

Through this program Perkins&Will have helped underserved communities build museums, community centers, daycares, grocery stores, hospitals, and more allowing residents to have access to resources they may have otherwise not had.

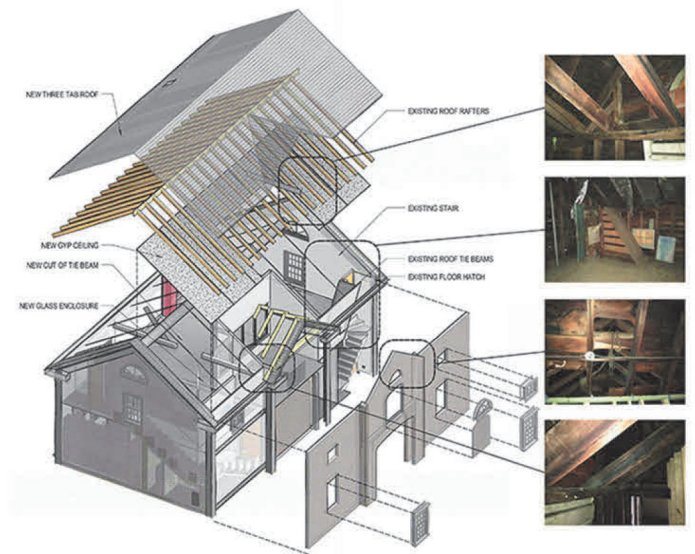


Diagram of Perkins&Will design for main farmhouse



Community members at farm during revitalization



Fowler Clark Epstein Farm after revitalization

03 Kounkuey Design Initiative

Located in Los Angeles, CA ~ Focused on equitable public space design

With a practice rooted in research, advocacy, and participatory design, KDI engages residents as co-creators to address urgent issues like climate change, public health, gender equity, and mobility justice. Projects such as the *Eastern Coachella Valley Shade Equity Master Plan* and *Play Streets* in Los Angeles reflect a commitment to transforming overlooked public spaces into inclusive, responsive community assets. Their integrated model ensures that design serves not just aesthetics, but justice. Through this model, KDI delivers sustainable, community-led solutions that expand access, equity, and empowerment. Winner of the 2022 National Design Award for Landscape Architecture and many others, KDI has proven their method is a successful one.

Gender Inclusive Spaces Project



Collage to plan a new plaza that better meets women's needs



Walk audit to understand how existing infrastructure is working for women

In 2018, KDI partnered with the World Bank and the Argentine Ministry of Interior to explore how public space design in informal settlements can better serve women and girls. In La Favorita, Mendoza, KDI engaged local women through walk audits, storytelling workshops, and design sessions to co-create concept plans for a neighborhood plaza. The resulting designs, featuring improved lighting, sidewalks, and seating, prioritized safety and mobility, and have informed both city upgrades and academic research at Harvard GSD. Beyond the site, KDI produced a diagnostic report, toolkit, and literature review to guide gender-informed urban planning across Argentina.

04 Sasaki

Located in Watertown, MA ~ Focused on inclusive community planning

Sasaki aims for design solutions that address social and environmental disparities. Their research grant program funds community-led projects that tackle challenges such as housing insecurity, transit access, and youth opportunity in historically neglected neighborhoods. By fostering partnerships with local organizations, civic leaders, and academic institutions, Sasaki integrates inclusive community engagement into the design process. Projects like the *Resilient Mystic River Watershed Initiative* demonstrate how environmental resilience and community empowerment can be advanced together. Sasaki's public events, incubators, and research labs reflect a broader mission to democratize design and promote equity in the built environment. The firm is widely recognized as one of the most awarded interdisciplinary design practices in the U.S. Their projects have received dozens of national and international awards

Parks & Equity Atlas Project

In 2021, Sasaki's research team advanced its analysis of equitable park access, revealing stark racial and spatial disparities across U.S. cities. By mapping 19 urban areas, the team identified communities that are over- or under-served in terms of park acreage per capita within a 10-minute walk. The findings show consistent patterns: in cities like Minneapolis and Buffalo, white residents are significantly overrepresented in high-access zones, while Black residents are disproportionately concentrated in areas with limited park access. These disparities align closely with historical redlining, current trends in gentrification, and systemic disinvestment. Through this work, Sasaki aims to illuminate not only who benefits from quality public space, but also the legacy and mechanisms of exclusion that shape today's urban environments.

Geographies of Low Access Zones

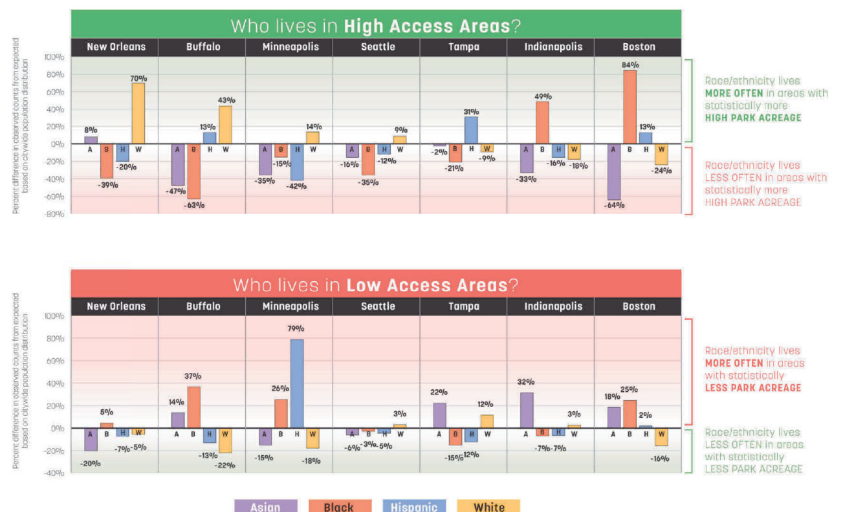
- Outer ring
- Inner core
- Speckled
- Radial

- High Park Acres per Capita
- Low Park Acres per Capita
- Not statistically high or low



SASAKI

Above: Diagram comparing park density in major U.S. cities



Above: Graph of different ethnicities access to parks

05 SmithGroup

Located in Detroit, MI ~ Focused on equity in urban spaces and education

SmithGroup produces actionable, equity-focused insights across health, climate, and education sectors. In projects across Detroit, Chicago, and Baltimore, SmithGroup uses spatial analysis, community mapping, and participatory planning to elevate the voices of historically marginalized populations. Their *Designing for Equity* white paper series and research on HBCU campus futures highlight a commitment to dismantling structural barriers in both civic and educational environments. In public health, SmithGroup's work on Chicago's West Side reimagines care access by aligning architectural interventions with health disparity data. This robust, transparent research platform positions the firm as a national leader in evidence-based equity design.

J.E.D.I. Toolkit

Through its JEDI (Justice, Equity, Diversity & Inclusion) Toolkit, SmithGroup has formalized a process to embed equity into all phases of design, from stakeholder engagement to post-occupancy evaluation. The order of Justice, Equity, Diversity, and Inclusion (J.E.D.I.) is intentional—prioritizing the dismantling of systemic barriers before building equitable frameworks. The firm's internal J.E.D.I. Committee leads this work, drawing on a diverse group of staff with lived experience and a shared commitment to ending racial injustice. Through initiatives like the J.E.D.I. Scholarship Program, SmithGroup provides tuition support and mentorship to students dedicated to advancing equity in the design professions. This program addresses structural barriers in education and creates pathways for underrepresented voices to thrive and shape the future of the built environment.



Richmond National Slavery Museum Render

"Interpreting the complex and painful history of enslavement in America goes far beyond designing a physical structure. It first involves designing a process to ensure that an entire community of voices are heard, and the messages shared are thoughtful, truthful and lead to greater understanding." - SmithGroup Website



Society's Cage - Experiential Installation

"Society's Cage is a bold interpretive installation that challenges visitors to reckon with America's long history of racial injustice and white supremacy. With a design rooted in statistical facts, it is at once unsettling and uplifting, a place to raise awareness, build empathy, and provide sanctuary for contemplation and healing." - SmithGroup Website

Conclusion

Across these five groups a clear pattern emerges: equity is no longer just an potential outcome, but a core part of the process. Each firm integrates research as a tool for accountability, using data, storytelling, and spatial analysis to highlight systemic disparities and inform more just design strategies. Whether through MASS's restorative justice work, Perkins&Will's Social Purpose Lab, or SmithGroup's J.E.D.I. research frameworks, these firms show that equity-centered design relies on and is shaped by engagement with communities.

Another shared approach is co-creation, design shaped not for, but with communities. KDI and Perkins&Will, for example, demonstrate how participatory processes produce infrastructure that reflects lived realities, particularly for underrepresented groups. These efforts are supported by internal labs, public toolkits, and collaborative studies that bring together design, planning, health, and policy.

Collectively, these practices signal a shift in architecture, from a reactive service to a proactive civic instrument. Research is no longer adjacent to design; it is embedded in its foundation. As these firms show equity-driven research is redefining what's possible, placing social impact and systemic repair at the center of what it means to build.

Source Links:

- <https://www.aia.org/advocacy/research/architectural-research>
- <https://www.sasaki.com/voices/parks-equity-atlas-project-update/>
- https://kounkuey.org/projects/service_area/research_test
- <https://perkinswill.com/research/>
- <https://perkinswill.com/social-purpose/>
- <https://savingplaces.org/stories/a-revitalized-historic-farm-thrives-in-one-of-bostons-oldest-neighborhoods>
- <https://www.dezeen.com/2022/05/25/george-floyd-noma-architecture-racial-diversity/>
- <https://www.smithgroup.com/our-work/projects>
- <https://massdesigngroup.org/research>
- <https://payette.com/studio/edi/>
- <https://www.aia.org/advocacy/research>

Title:

“Architectural Research in Practice: COMMUNITY SCALE: Urbanism, Equity, Resilience, Climate Adaptation

Ewurum Chinememma

Dr. Robert McKinney

DSGN 495(G) Summer 2025

University of Louisiana Lafayette

Summer 2025

6/23/2025



OMA designs Chengdu Future City as "alternative to the typical masterplan"

This project represents OMA's engagement in large-scale urban planning, integrating public space, community infrastructure, and environmental strategy.

Introduction

The three main stages of impact occupant, building, and community are the focus of the study agenda set forward by the American Institute of Architects (AIA). Every size serves as a distinct lens through which architects may produce design solutions based on data and practical difficulties. I have decided to concentrate on the Community Scale, which examines the connections between architecture and more general systems of equality, resilience, urbanisation, and climate adaptation.

Because it emphasizes the architect's developing function as a civic actor and environmental steward, this topic holds great significance for me. Design must connect with neighborhoods, infrastructure, policy, and the people most impacted by these issues in a period of growing climate vulnerability, housing disparities, and social fragmentation. Community-scale research, in my opinion, contributes to redefining architecture as a force for social, ecological, and cultural change rather than only as a profession of form-making. It challenges us to consider who we build for, how to include communities, and what kinds of legacy our built environments leave behind.

I intend to gain knowledge about how top architecture firms like OMA/AMO, SOM, Corgan, Levers Architect, and PAGE integrate equity-focused initiatives, public engagement, urban design methods, and climate resilience into their work through this study process. I'm interested in learning how these companies tackle systemic urban issues via multidisciplinary research, community engagement, and innovative design. Finding resources, techniques, and design frameworks that may guide my own process of developing inclusive, flexible, and socially conscious environments is ultimately what I'm interested in.

Firm 1: OMA / AMO

Location: Global (Rotterdam, New York, Hong Kong, Doha, Australia)

Research Theme: COMMUNITY SCALE: Urbanism, Equity, Resilience, Climate Adaptation

Research Focus: City-scale resilience strategies, energy transitions, and master planning for equitable urban systems

Relevant Lab / Initiative / Think Tank: **AMO** – OMA's embedded think tank: conducts research on energy planning (e.g. Roadmap 2050 for a low-carbon Europe), urban policy, and strategic public exhibitions

Summary OMA uses policy-oriented research and master planning to interact at the community level. AMO incorporates architecture into a wider social conversation by producing strategic, non-architectural outputs including urban policy recommendations and low-carbon energy roadmaps. Public space and mixed-use neighborhood activation are key components of recent constructed projects, such as the Eagle + West Brooklyn complex. The way that AMO combines research, exhibition, and strategic planning shows how design thinking can be used to solve climate adaptation and urban justice. OMA is positioned as a significant player on global urban resilience because to its interdisciplinary approach.



Taipei Performing Arts Center- OMA



Eagle + West masterplan (Brooklyn)

Firm 2: SOM (Skidmore, Owings & Merrill)

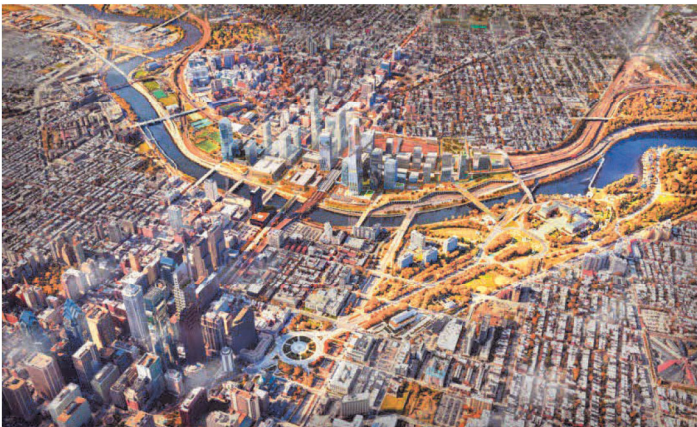
Location: Global (Orig. Chicago/New York)

Research Theme: COMMUNITY SCALE: Urbanism, Equity, Resilience, Climate Adaptation

Research Focus: City-scale resilience strategies, energy transitions, and master planning for equitable urban systems

Relevant Lab / Initiative / Think Tank: Equity Design Lab develops practices and policies to embed justice and community-driven processes into projects. SOM Foundation awards interdisciplinary graduates researching societal challenges

Summary Through multidisciplinary research, civic infrastructure, and equity-centered design, SOM is a prime example of community-scale architecture. In their Museum Campus Vision for Chicago, 250 acres are revitalized via public access, rewilding, and neighborhood connectedness. Guidelines for wildfire-resilient urban design at the regional, municipal, and block levels were released by SOM researchers in California. Projects such as the 20-Minute Neighborhood Study for San José emphasize equitable, walkable urban networks (som.com). In-house, the Equity Design Lab and Foundation grants support initiatives that foster social resilience and community impact.



Museum Campus Vision aerial rendering showing green corridors and public landscapes.

Firm 3: PAGE Southerland Page, Inc. (PAGE)

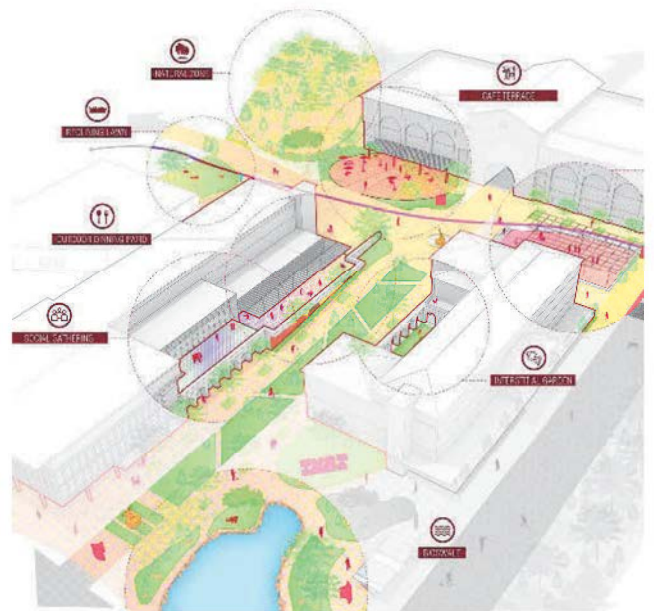
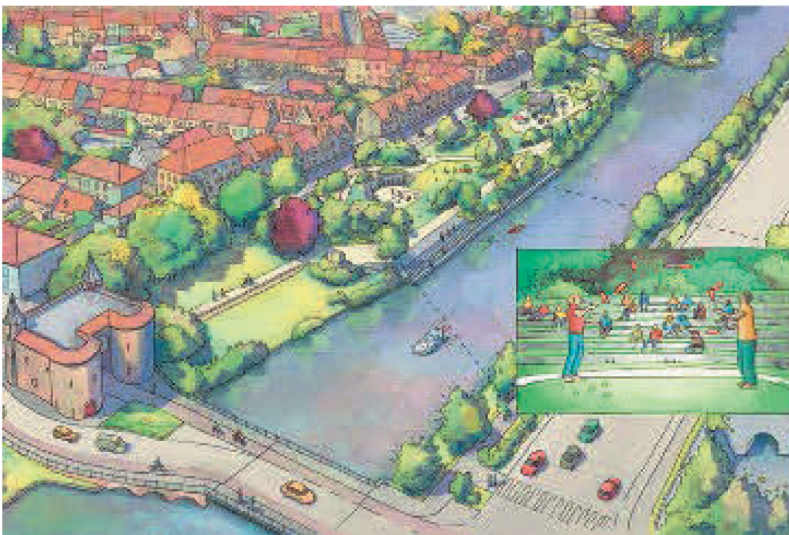
Location: Headquarters in Washington, D.C.; 21 offices across the U.S., Mexico, and UAE

Research Theme: COMMUNITY SCALE: Urbanism, Equity, Resilience, Climate Adaptation

Research Focus: Master planning for public realm, energy-resilient infrastructure, socially inclusive civic projects

Relevant Lab Initiative: Urban Design + Planning Services PAGE's dedicated division focuses on urban strategy, downtown revitalization, and climate-adaptive public spaces

Summary Through its strategic urban design projects, such as public-facing civic centers that support equal access to cultural, educational, and green infrastructure, PAGE exemplifies its effect at the community level. Their planning frameworks priorities parks, transit corridors, and mixed-use projects while including social justice and climate resilience (e.g., flood prevention in public realm interventions). Infrastructure integration, policy gateways, and community workshops are frequently included in their civic initiatives. PAGE is an example of how big businesses incorporate climate-adapted urbanism into designs that are guided by policy and meaningful citizen involvement.



PAGE's urban design masterplan visualization showing green corridors, mixed-use buildings, and flood-adaptive infrastructure.

Firm 4: Corgan

Location: Founded in Dallas, TX; now with 19 global offices

Research Theme: COMMUNITY SCALE: Urbanism, Equity, Resilience, Climate Adaptation

Research Focus: Sustainable infrastructure, water resilience, equitable community engagement, cognitive wellness

Relevant Lab Initiative: Building Brains Coalition – A Corgan-led initiative uniting architecture, neuroscience, climate, and public health to design for cognitive resilience in communities. **Corgan Hugo & Sustainability Team** – Internal research arm conducting studies on mass timber carbon, multifamily housing shifts, and complete community design

Summary Among Corgan's community-scale tactics are "Complete Communities" projects, such as the Houston Westwood involvement, which employ equitable mapping, charrettes, and participatory workshops to guide the design of parks, schools, and amenities. Their Building Brains Coalition bridges the gap between health and climate action by incorporating cognitive wellness into the design of public infrastructure. Their studies on tenant preferences and the carbon impact of bulk lumber inform fair, environmentally friendly design choices.



New 900,000 square-foot, 17-gate terminal facility for the San Antonio International Airport.

Firm 5: Leers Weinzapfel Associates (Levers Architect)

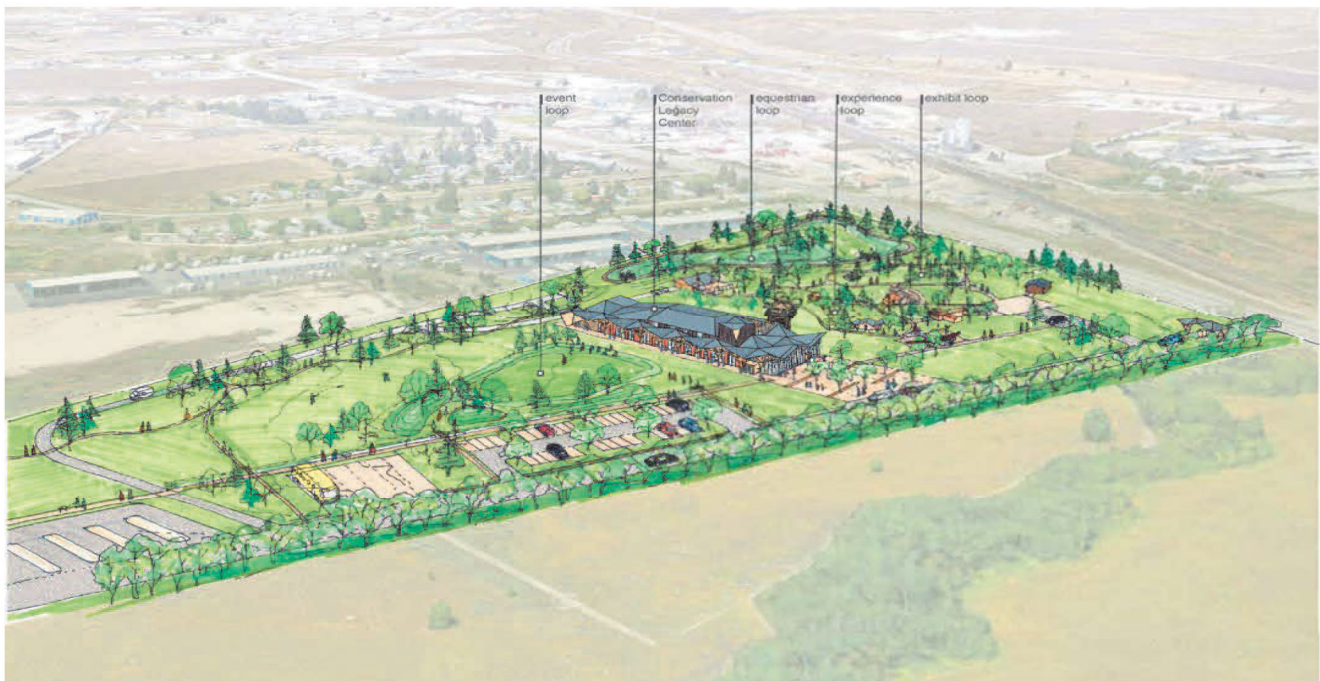
Location: Boston, MA; focus on civic, educational, cultural buildings

Research Theme: COMMUNITY SCALE: Urbanism, Equity, Resilience, Climate Adaptation

Research Focus: Community-driven design in public buildings, new civic typologies, resilient material use

Relevant Lab Initiative: Civic Studio / Community Engagement Programme Integrates user workshops, environmental goals, and civic narratives into context-sensitive design

Summary Through civic infrastructure such as libraries, schools, and cultural centers that prioritizes participation, public utility, and environmental sustainability, Levers Architect illustrates community-scale effect. Their method connects material and energy-performance goals, promotes local ownership, and integrates community voice. Their award-winning municipal projects exhibit inclusive programming and resilient tactics (e.g., passive systems, local materials, LEED aims), even though specifics aren't made public. Levers demonstrates how targeted, smaller businesses may oversee intricate community initiatives that strike a balance between social value, equity, and resilience.



Public building site diagrams representing community gatherings.



The Conservation Legacy Center will anchor the National Museum of Forest Service History's campus in Missoula, Montana

CONCLUSION

Examining the work of OMA/AMO, SOM, Corgan, PAGE, and Leers Weinzapfel Associates demonstrates a significant change in architectural practice, where community-scale research is essential to solving today's pressing issues. The incorporation of multidisciplinary research, public involvement, and climate resilience into design is a common theme among these businesses. Each company views architecture as a weapon for equality and environmental stewardship, whether it is through the policy-driven urban strategies of AMO, the data-rich resilience planning of SOM, the health-focused community hubs of Corgan, the civic masterplans of PAGE, or the people-centered civic spaces of Levers Architect.

This study demonstrates how architectural practice is developing into a systems-oriented, research-informed field that now considers infrastructure, policy, and social effect in addition to the building envelope. Additionally, it emphasises how important cooperative, participatory methods are to building resilient communities.

My dedication to working at the interface of justice and design has grown as a result of this job. It makes me think about how architects can help bring about systemic change and encourages me to look into positions where community empowerment and research are essential to practise. As time goes on, I am becoming increasingly aware that architecture should benefit entire communities rather than simply individual clients.

Firm	Research Focus	Key Initiative / Lab	Community Impact Strategy	Notable Project / Output
OMA / AMO	Urban systems, policy, climate strategy	AMO – Strategic design think tank	Masterplans, climate policy, exhibitions	<i>Roadmap 2050, Eagle + West</i>
SOM	Resilient cities, social equity, future urbanism	Equity Design Lab / SOM Foundation	Neighborhood plans, wildfire resilience, 20-minute cities	<i>Museum Campus Vision, San José 20-Min City</i>
Corgan	Public health, equity, cognitive resilience	Building Brains Coalition, Sustainability R+D	Community charrettes, neuro-	<i>Alief-Westwood Plan, Mass Timber CO₂ Study</i>

			architecture, carbon studies	
PAGE	Civic infrastructure, climate adaptation, urban policy	Urban Design + Planning Studio	Downtown revitalization, flood mitigation, inclusive engagement	<i>Austin Central Library, Midtown Houston Masterplan</i>
Leers Weinzapfel	Public buildings, equity, passive strategies	Civic Studio / Community Engagement	Stakeholder- informed design, LEED goals, accessible public space	<i>UMass Olver Design Building, public libraries</i>

Appendices

1. OMA / AMO

- **OMA / AMO Official Website**

<https://oma.com>

Provided project descriptions and visuals for *Eagle + West* and AMO's masterplans.

- **Roadmap 2050 by AMO**

<https://www.roadmap2050.eu>

Referenced as a major policy-based energy planning initiative showing AMO's community-scale impact.

- **OMA Projects – Urbanism**

<https://oma.com/projects>

Used to find masterplans and urban regeneration efforts related to equity and adaptation.

2. SOM (Skidmore, Owings & Merrill)

- **SOM Official Website**

<https://www.som.com>

Source of *Museum Campus Vision*, *20-Minute Neighborhood*, and wildfire resilience strategies.

- **Equity Design Lab**

<https://www.som.com/ideas/equity-design-lab>

Reviewed for internal firm efforts addressing justice and urban equity.

- **SOM Foundation**

<https://somfoundation.som.com>

Highlighted their research funding for socially relevant design research.

3. Corgan

- **Corgan Official Website**

<https://www.corgan.com>

Core source for projects like *Alief-Westwood Complete Community*, and links to their research initiatives.

- **Building Brains Coalition**
<https://www.corgan.com/building-brains>
 Showcases cognitive architecture and its impact on community wellness.
- **Corgan Research Reports (Mass Timber, Renter Studies)**
<https://www.corgan.com/research>
 Used for sourcing material on carbon, housing trends, and urban equity.

4. PAGE (Page Southerland Page, Inc.)

- **PAGE Official Website**
<https://www.pagethink.com>
 Source for *Austin Central Library*, *Urban Planning Studio*, and resilience-focused urban design.
- **Midtown Houston Master Plan**
<https://www.pagethink.com/project/midtown-houston>
 Project example showing integration of planning, community engagement, and sustainability.
- **PAGE Urban Design + Planning Studio**
<https://www.pagethink.com/services/urban-design-planning>
 Provided framework for their community-scale services and philosophy.

5. Leers Weinzapfel Associates

- **Leers Weinzapfel Official Website**
<https://www.lwa-architects.com>
 Provided info on public and civic projects that emphasize accessibility, equity, and sustainable design.
- **UMass Olver Design Building**
<https://www.lwa-architects.com/project/john-w-olver-design-building/>
 Source for LEED-certified public infrastructure with community-focused design.
- **Civic Architecture Portfolio**
<https://www.lwa-architects.com/projects/>
 Highlighted public libraries and community centers relevant to your theme.

PROJECT:
THE MOSS VEIL

LOCATION:
ICELAND

EXPERIENCE:
UL LAFAYETTE



PROJECT:
BRIDGE TO THE HEART HOTEL

LOCATION:
ARKANSAS

EXPERIENCE:
UL LAFAYETTE



PROJECT:
AVOYELLES ELEMENTARY RENO.

LOCATION:
MANSURA, LOUISIANA

EXPERIENCE:
HOLLY & SMITH ARCHITECTS



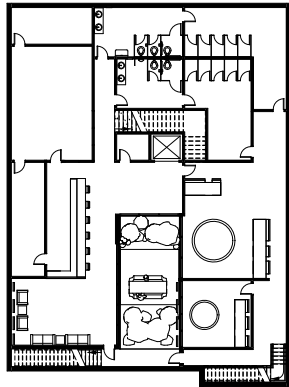
PROJECT:
LSU ZETA TAU ALPHA RENO.

LOCATION:
BATON ROUGE, LOUISIANA

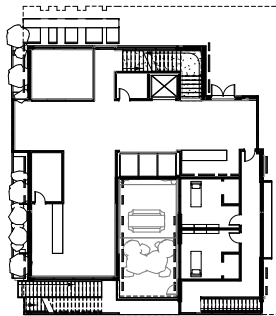
EXPERIENCE:
HOLLY & SMITH ARCHITECTS



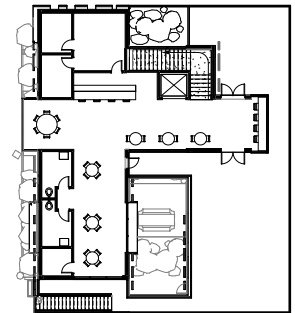
THE MOSS VEIL



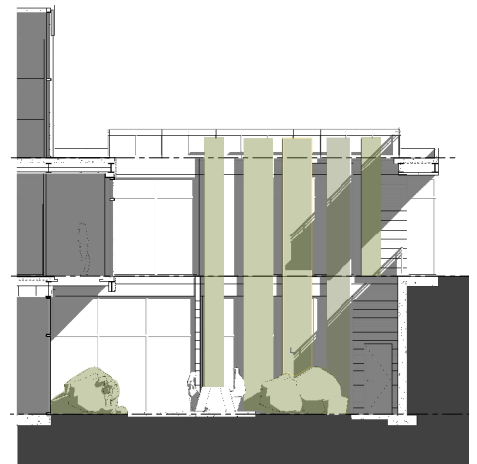
BSMT FLOOR PLAN



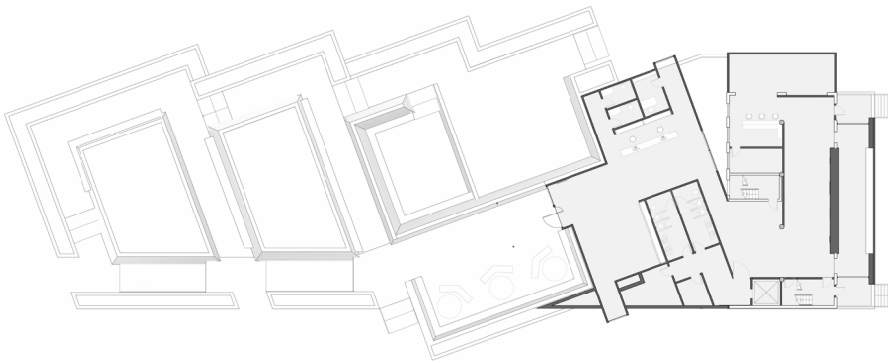
1ST FLOOR PLAN



2ND FLOOR PLAN



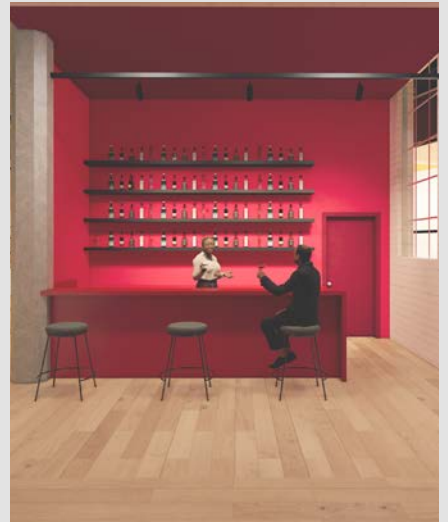
BRIDGE TO THE HEART HOTEL



1ST FLOOR PLAN

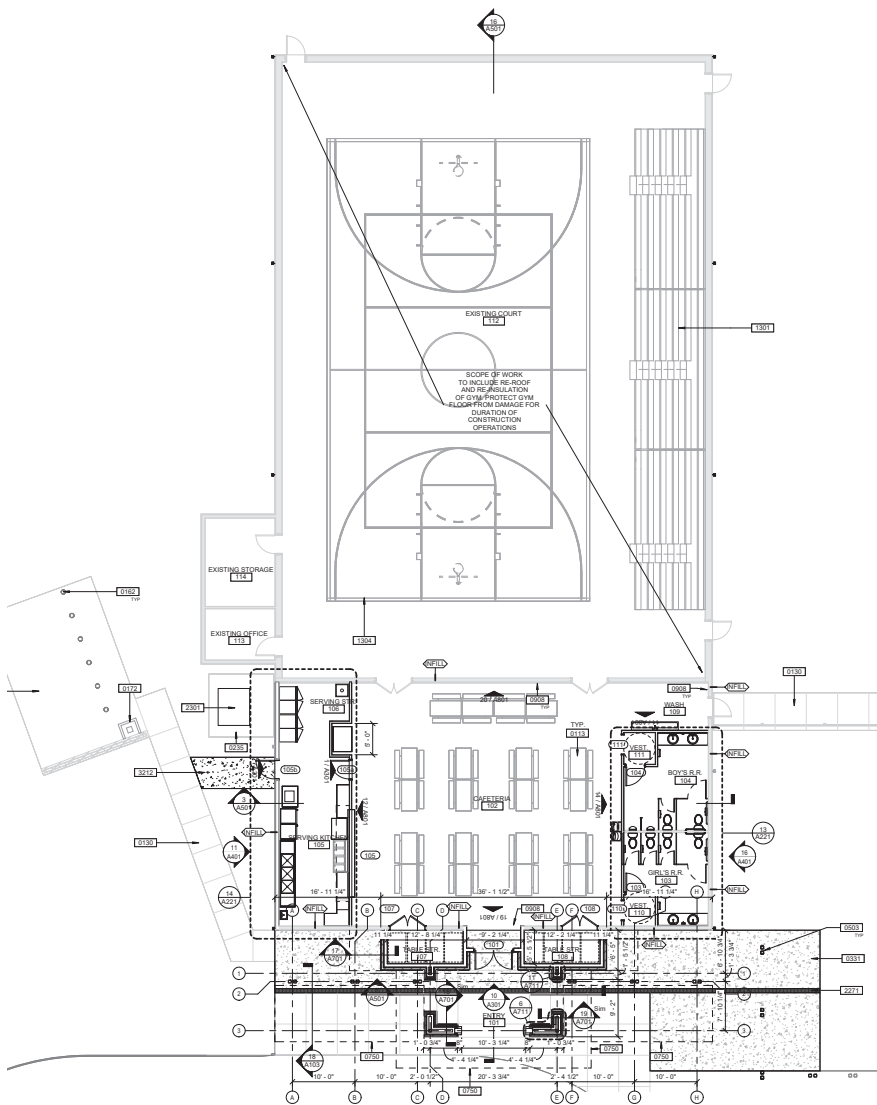


TYPICAL HOTEL PLAN

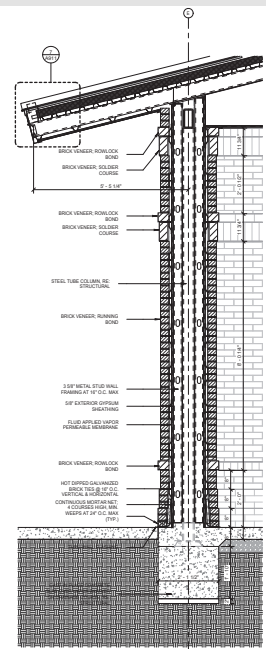


AVOYELLES PUBLIC CHARTER SCHOOL GYMNASIUM RENOVATION

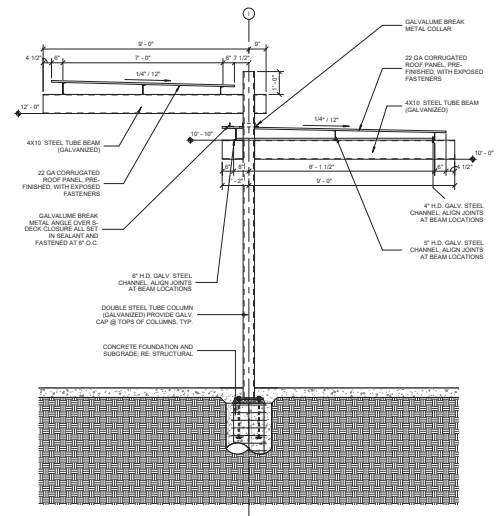
HOLLY & SMITH ARCHITECTS



FLOOR PLAN

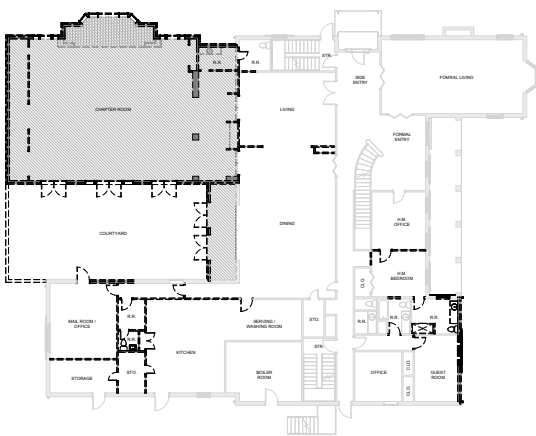


WALL DETAIL

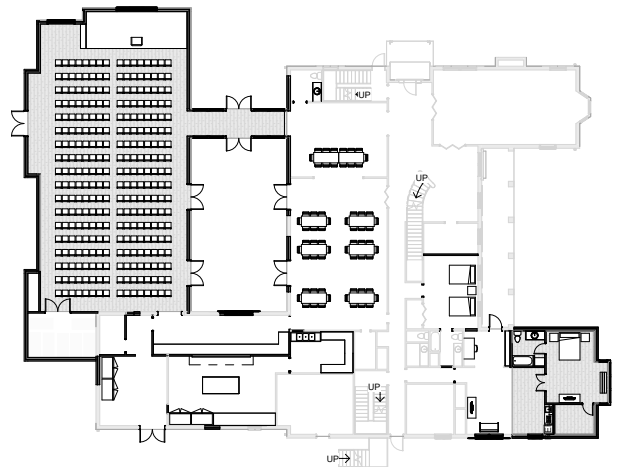


CANOPY DETAIL

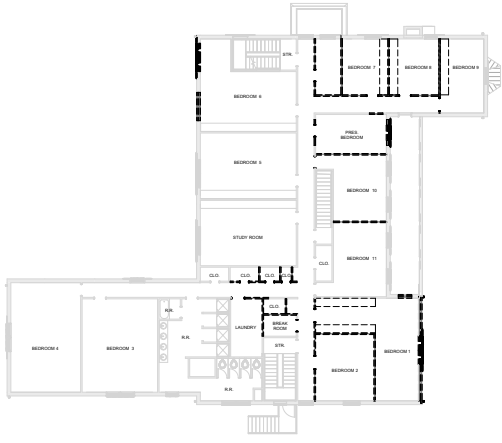
LSU ZETA TAU ALPHA
HOLLY & SMITH ARCHITECTS



FIRST FLOOR
DEMO PLAN



FIRST FLOOR
PROPOSED PLAN



SECOND FLOOR
DEMO PLAN



SECOND FLOOR
PROPOSED PLAN





Dawsyn Faulkner
Master of Architecture Candidate
University of Louisiana at Lafayette
Ddawsyn@gmail.com
(504)655-3858

Designing for Resilience, Equity, and Environment





PROJECT DESCRIPTION

The Grand Chenier Research and Community Center is a project I designed in my first semester of graduate school. After analyzing the local population and environment, I found the area to be highly vulnerable to flooding, coastal erosion, and saltwater intrusion. In response, I designed a self-sufficient hub that provides solar power, rainwater harvesting, and a space that celebrates the region's natural beauty. The center allows locals and visitors to learn about native plant life that helps combat erosion and to take in striking views of the landscape. A watchtower complements the building, framing these views while symbolizing resilience and observation. Its form draws from the belief that in times of chaos, we can find beauty by looking inward to reflect and outward to hope.

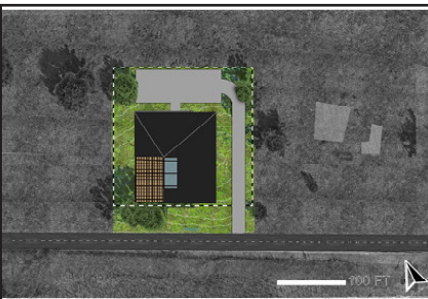
EVENT SPACE



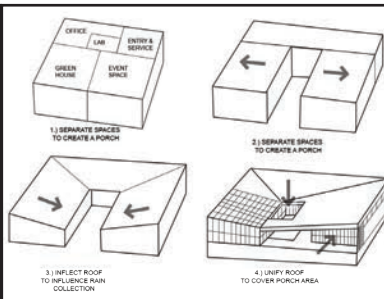
GREEN HOUSE



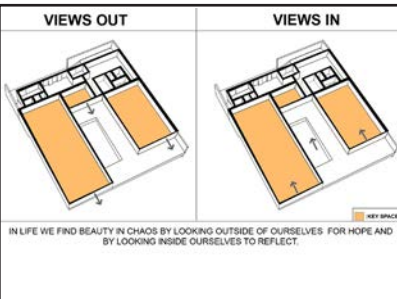
SITE PLAN



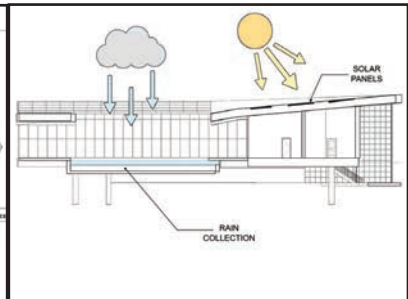
FORM DIAGRAM



CONCEPT DIAGRAM



SYSTEMS DIAGRAM



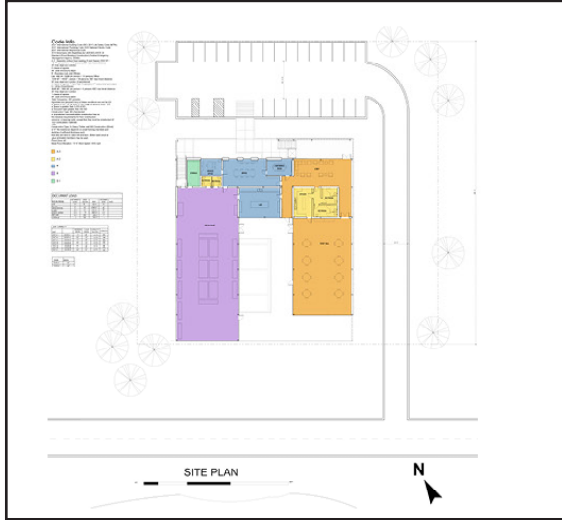
PORCH VIEW



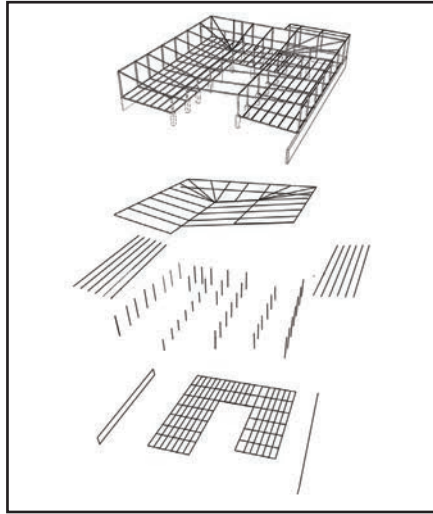
PORCH VIEW



FLOOR PLAN



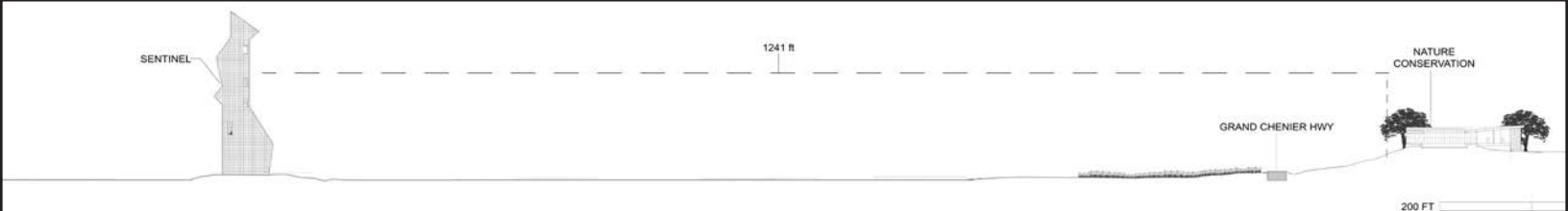
STRUCTURAL DIAGRAM



MODEL



SITE SECTION



Site Plan



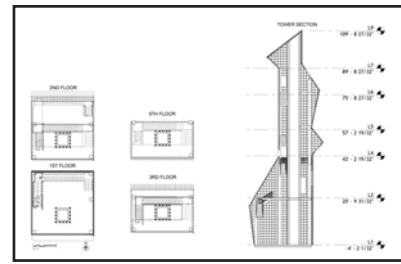
Watch Tower



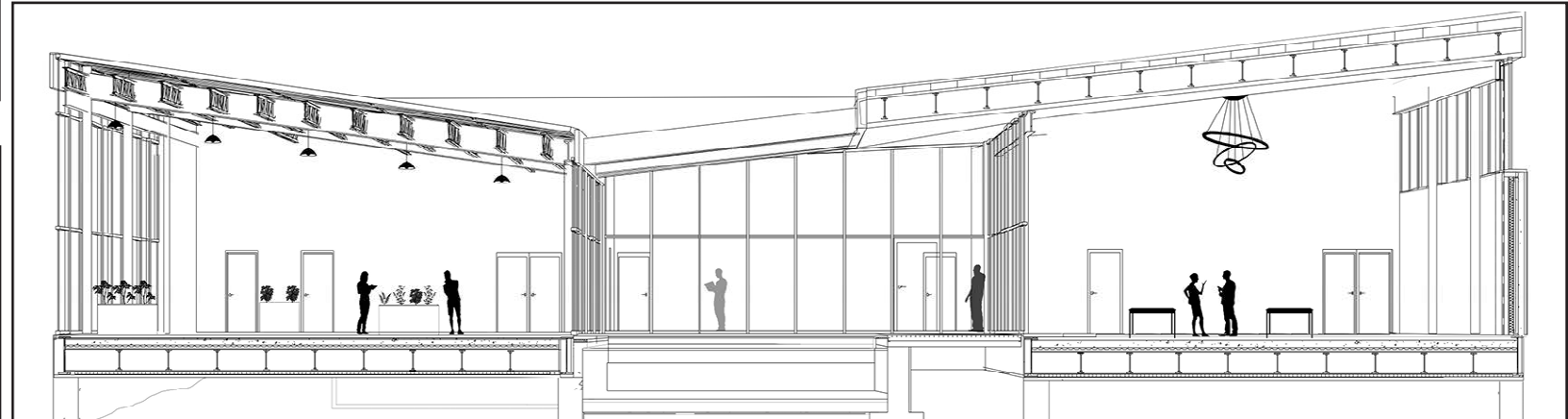
Watch Tower View



Watch Tower Section & Plans



PERSPECTIVE SECTION



Reach of Resilience: Laffiya Resource & Education Center Community Garden/Entry



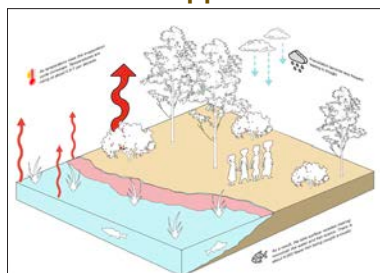
PROJECT DESCRIPTION

Lake Chad has shrunk by over 90% since the 1960s, leaving communities like Baga Sola in crisis. In response, this project addresses both environmental degradation and human need by creating a self-sustaining hub that educates, unifies, and empowers. It reaches inward to provide adaptive spaces, essential resources, and opportunities for learning. It reaches outward to restore biodiversity and promote environmental balance. Through ecological stewardship, resource management, and strategic partnerships, the design becomes a catalyst for resilience revitalizing local infrastructure and offering a model for sustainable development across the Sahel.

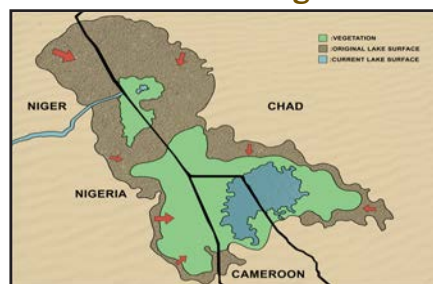
Location



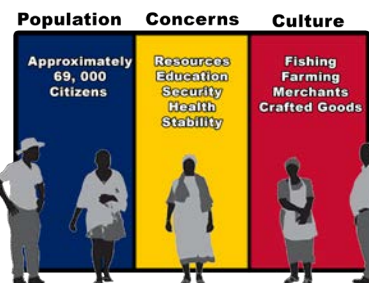
How It Happens



Lake Shrinkage



The People

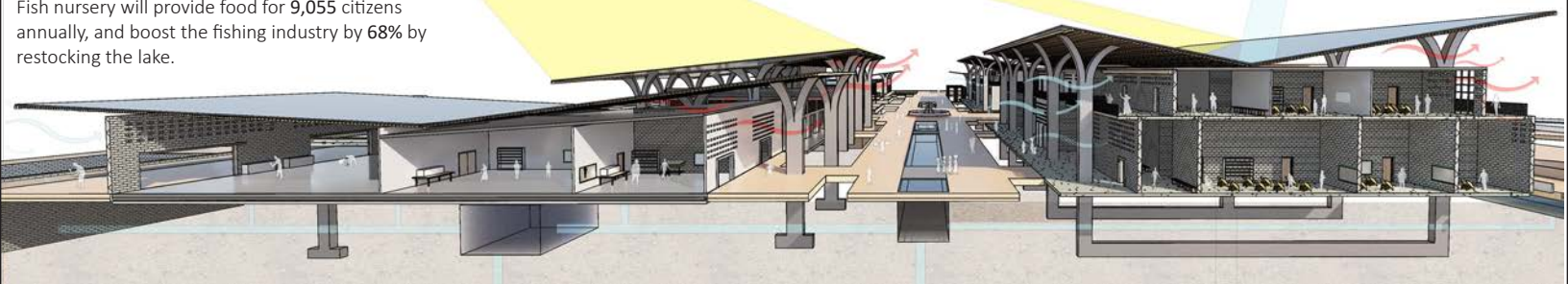


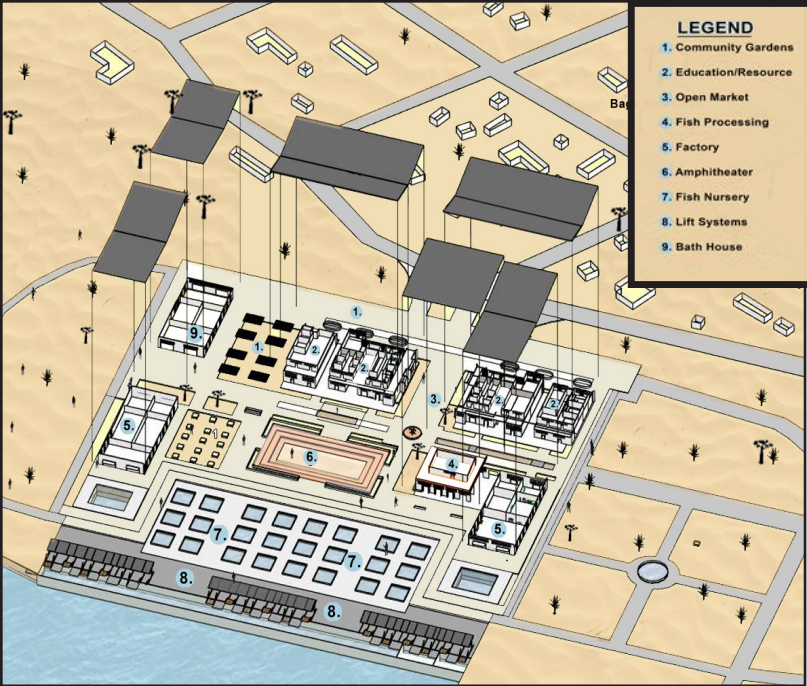
244,500 Fish

Fish nursery will provide food for 9,055 citizens annually, and boost the fishing industry by 68% by restocking the lake.

800,000 kWh

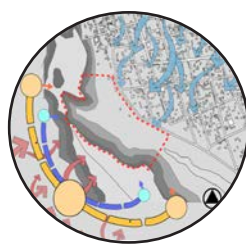
Solar panels will generate the electricity which can provide the energy to around 2,000 simple homes annually.





- LEGEND**
1. Community Gardens
 2. Education/Resource
 3. Open Market
 4. Fish Processing
 5. Factory
 6. Amphitheater
 7. Fish Nursery
 8. Lift Systems
 9. Bath House

Solar & Wind

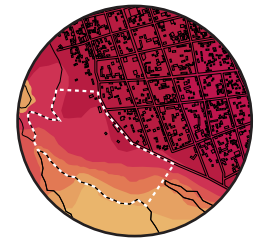


Context



Water Flow Blockage

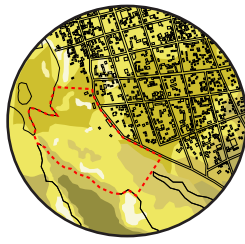
Surface Temperature



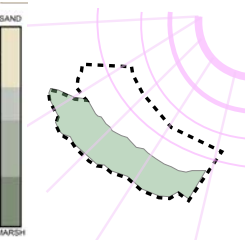
Land Conditions



Soil Moisture

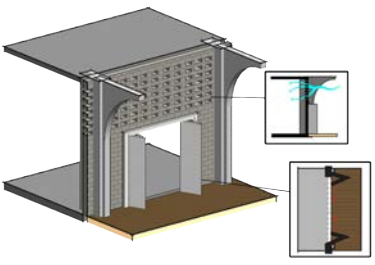


Sound

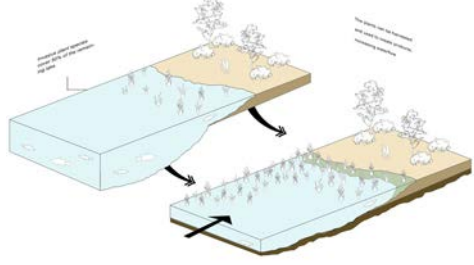
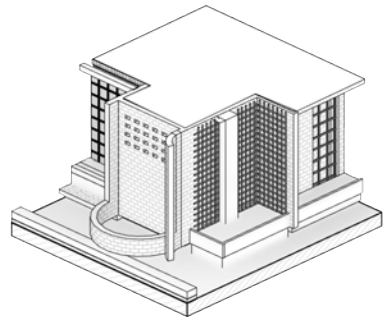


Natural Balance

Facade Ventilation



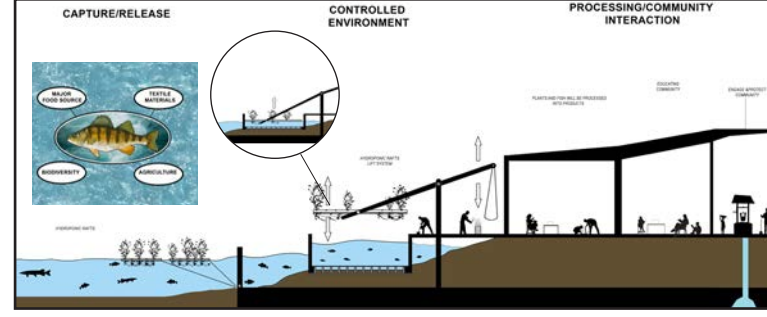
Garden Planter



Concept Section



Shrinkage Catalyst



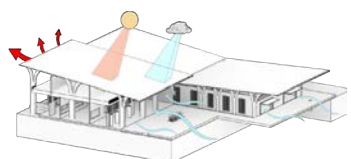
Fish Nursery



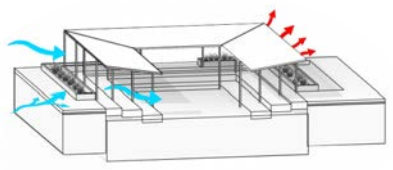
Community Dwelling



Building Form



Amphitheater



Educational Space





Mya Andrus
David Beverly

Mission

db | Architecture of Acadiana core values focus on:

1. Commitment to Excellence
2. Authentic Relationships
3. Making Your Job Easier
4. Checking Our Ego at the Door
5. Projects on Budget
6. Being Designers you Like



Our Team

15 Employees

13 – Lafayette

2 – Baton Rouge

Firm Experience

Participated in team-based Lunch & Learn sessions to expand technical and product knowledge.

Engaged in collaborative educational discussions to address project-specific challenges and share solutions.

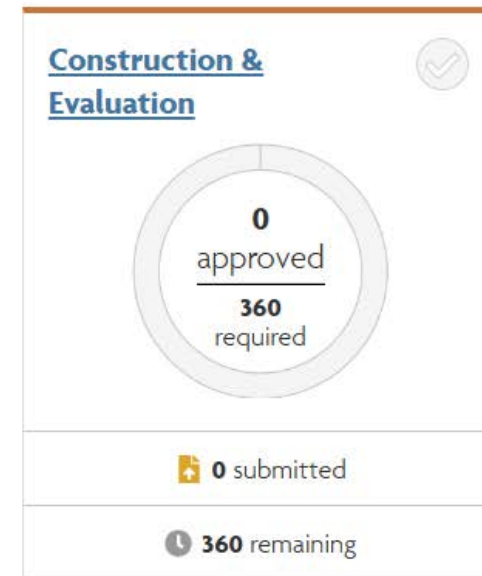
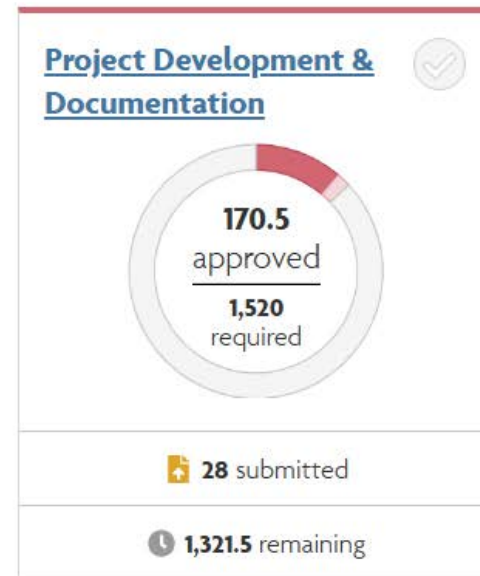
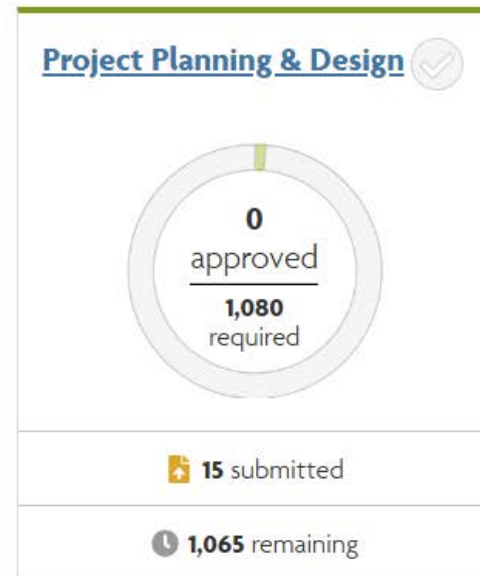
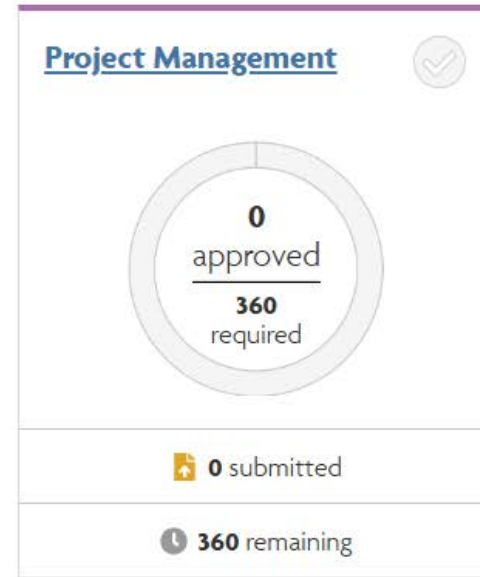
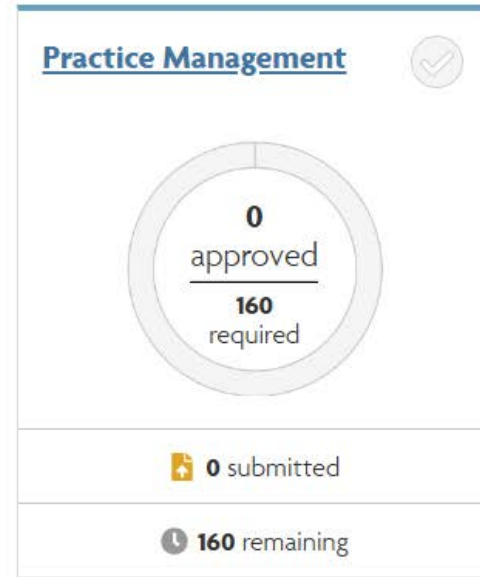
Initiated reflection sessions to begin identifying personal interests and narrowing future career options.

Contributed to planning efforts for future AIA Convention attendance to support ongoing learning and industry engagement.

Axp

Total Hours Worked

~ 80



Project Development & Documentation



28 submitted

1,321.5 remaining

Covers construction documents and regulatory approvals.

Producing drawings and specifications

Coordinating with authorities

Preparing permit submittals

Updating cost estimates
Selecting FF&E (furniture, fixtures, equipment)

Project Planning & Design



 **15** submitted

 **1,065** remaining

Focuses on schematic design and code compliance.

Developing design concepts

Building code analysis

Sustainability goals

Material and system selection

Coordinating with consultants

Next Steps

Intend to continue full-time employment at DB following graduation to deepen firm engagement.

Pursue structured training and mentorship to transition into a Project Manager role.

Take on leadership responsibilities by mentoring and guiding incoming interns.

Reflection

My time at DB Architecture of Acadiana has deepened my love for architecture. Early doubts gave way to daily excitement—I look forward to showing up and discovering new challenges and ideas.

I've learned across a wide range of tasks and gained invaluable insights from thoughtful mentors. Their support has not only shaped my skills, but also reaffirmed my purpose in this field



Longo **ARCHITECTURE** Studio

JOSHUA FREDERICK - INTERNSHIP



Longo Architecture Studio is a Lafayette, Louisiana based architecture firm specializing in the design of animal care facilities and human dental facilities.

Sal Longo, Jr., Principal Architect and Owner, has been **designing animal care facilities since 1997 and dental facilities since 2010.**



OUR TEAM



Sal Longo, Jr.
Principal Architect | Owner

Sal Longo, Jr. earned both a Bachelor's and Master's degree in Architecture from Tulane University School of Architecture, where he also served as an Adjunct Instructor for seven years.



Josh Frederick
Designer



Brock Sampite
Designer

DEVELOPMENT



When I first joined Longo Architecture Studio in 2021, my role focused primarily on observation and foundational support tasks. As I gained experience, I was gradually given more complex responsibilities, including drafting, 3D modeling, site analysis, client presentations, and early-stage design development. This steady progression not only helped me build confidence in my technical abilities but also gave me a well-rounded understanding of architectural workflows and the full lifecycle of a project.

TECHNICAL SKILLS



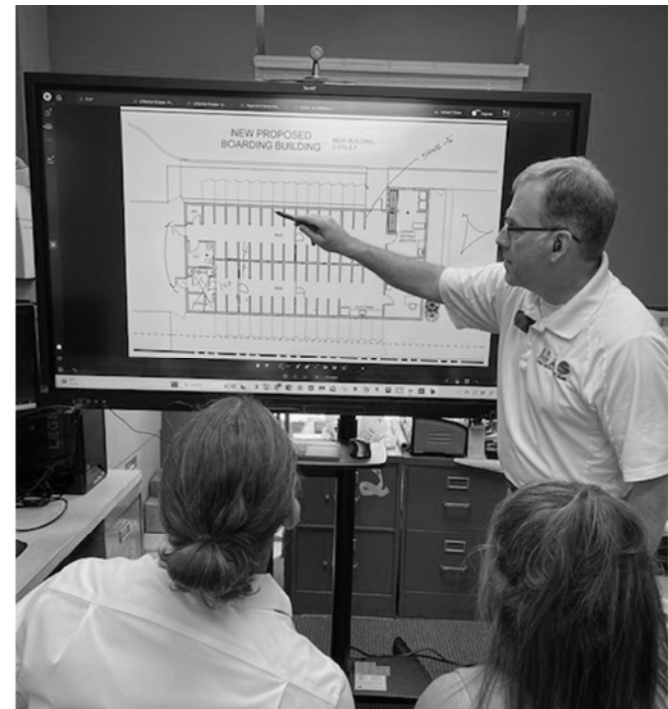
Over the course of my time at LAS, I've significantly strengthened my proficiency in industry-standard software, including Revit, Procore, and Bluebeam. I've also had the opportunity to explore and experiment with rendering tools such as Twinmotion, Enscape, and D5, which has enhanced my ability to communicate design intent visually.

In addition to software skills, I've developed a more disciplined and methodical approach to construction documentation, detailing, and digital file management; skills that are essential in a professional architectural setting and critical to maintaining project efficiency and accuracy.

THE BENEFITS OF WORKING AT A SMALLER FIRM

One of the most rewarding aspects of working at a small firm like Longo Architecture Studio is the highly collaborative learning environment. I've had the unique opportunity to engage directly with the principal architect on a daily basis, whether it's walking into the next room for immediate feedback or sitting down together to review redlines or details using our office's interactive touchscreen board.

This level of direct mentorship and real-time discussion creates a clarity and depth of learning that's hard to find in larger firms. The ability to ask questions, receive guidance, and understand tasks in close collaboration with leadership has accelerated my growth and deepened my understanding of architectural practice in a meaningful way.



WORK CULTURE AND FIRM STRUCTURE

The work culture at Longo Architecture Studio is rooted in open communication, collaboration, and mutual support. The open office layout encourages constant dialogue and transparency, creating a dynamic environment where ideas and feedback flow naturally. Over time, the studio has come to feel like an extended family and a close-knit team that supports one another both professionally and personally.

The firm's structure is both intuitive and uniquely suited to its size. With a small team, there's a natural fluidity in project involvement. One day you might be working on a dental clinic, and the next you're contributing to a veterinary facility or a feasibility study. This flexibility fosters a strong sense of adaptability and shared ownership. Because we're in constant communication about our tasks and progress, there's a continuous creative exchange happening from one desk to the next, making the workflow seamless and collaborative.



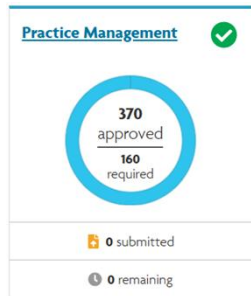
MENTORSHIP

The mentorship I've received at Longo Architecture Studio has been truly exceptional. The firm's intimate scale and collaborative environment have allowed me to engage in multiple phases of each project, from initial concepts to construction documentation. This level of involvement would not have been possible without the trust and guidance of Sal, whose support has been instrumental in my growth.

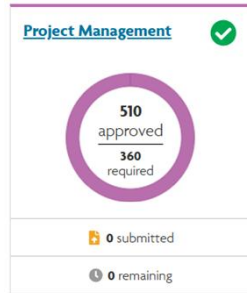
I'm deeply grateful for both the architectural knowledge and life lessons I've gained during my time at LAS. The skills, insights, and values I've developed here will continue to shape my career for years to come. I couldn't have asked for a more supportive mentor or a better environment in which to begin my journey into the architectural profession.



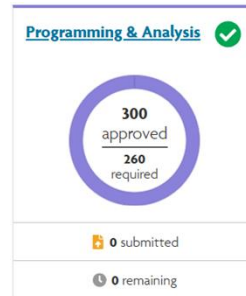
NCARB AXP TASK MAP



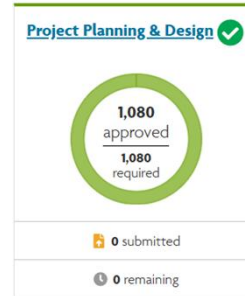
- Develop RFI responses
- Project documentation process



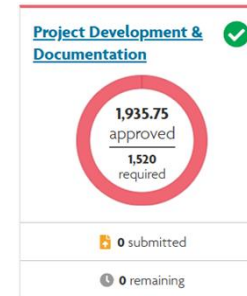
- Applying for permits
- Resolve conflicts during design and construction



- Zoning and ordinance analysis
- Preparing building program for clients



- Building code analysis
- Prepare alternative designs
- Present designs to clients



- Present drawings to clients
- Select fixtures and equipment to fit clients needs



- Review shop drawings
 - Respond to RFIs
 - Site visits
 - Close-out procedures and documentation
-

CAREER AND LICENSURE INSIGHT

Working at Longo Architecture Studio has broadened my understanding of the many diverse paths within the field of architecture. While LAS specializes in veterinary and dental facilities, my experience here and the connections I've made through Sal, have introduced me to architects working in a wide range of specialties. This exposure has inspired me to continue developing my skills and, eventually, determine my own area of specialization with the long-term goal of opening my own firm.

As I look ahead, the next step on my path to licensure is preparing for the Architect Registration Examination (ARE). My goal is to complete all divisions of the exam by the end of 2026 and apply for licensure through the Louisiana State Board of Architectural Examiners (LSBAE).

NCARB EXPERIENCE SUMMARY

TOTAL EXPERIENCE HOURS
4,883.75

YEARS OF EXPERIENCE
2.687 [?](#)

JURISDICTION
Louisiana

	APPROVED	REQUIRED	SAVED	SUBMITTED	REMAINING ?
Experience Summary	4,883.75	3,740	0	0	0
✔ Practice Management	370	160	0	0	0
✔ Project Management	510	360	0	0	0
✔ Programming & Analysis	300	260	0	0	0
✔ Project Planning & Design	1,080	1,080	0	0	0
✔ Project Development & Documentation	1,935.75	1,520	0	0	0
✔ Construction & Evaluation	688	360	0	0	0

LOUISIANA STATE BOARD OF ARCHITECTURAL EXAMINERS
9625 Fenway Ave., Ste. B Baton Rouge, LA 70809
(225) 925-4802 | LSBAE.com | bd@lsbae.com